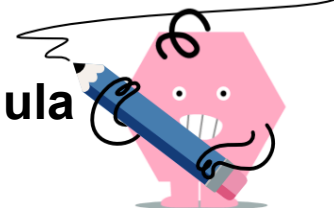




Quadratic Formulas - Purpose to Formula

**1**

What is the equation for this?

Find the vertex (turning point) of the graph

A $x = \frac{b}{4ac}$

B $x = \frac{-b}{2a}$

C $x = \frac{b^2}{4a}$

2

What is the equation for this?

Find the roots (solutions) of the equation

A $x = \frac{b^2 \pm \sqrt{b^2 - 4ac}}{2a}$

B $x = \frac{b^2 \pm \sqrt{b^2 + 4ac}}{2a}$

C $x = \frac{-b \pm \sqrt{b^2 - 4ac}}{2a}$

3

What is the equation for this?

Find the number and type of roots (solutions)

A $\Delta = b^2 + 4ac$

B $\Delta = b^2 - 4ac$

C $\Delta = \frac{b^2}{4ac}$