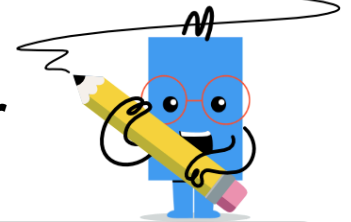
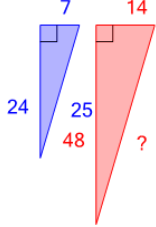




Pythagorean Triple Pairs - Solve Either

**1**

Find the length of the missing side given that these are similar triangles

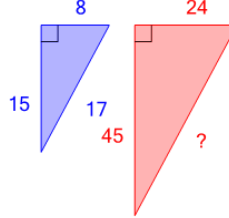


(not to scale)

A	B	C
10	80	85
D	E	F
50	15	30

2

Find the length of the missing side given that these are similar triangles

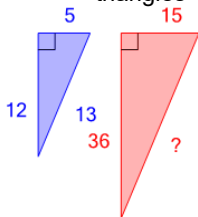


(not to scale)

A	B	C
86	31	46
D	E	F
51	26	36

3

Find the length of the missing side given that these are similar triangles

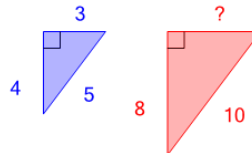


(not to scale)

A	B	C
54	18	45
D	E	F
39	60	12

4

Find the length of the missing side given that these are similar triangles

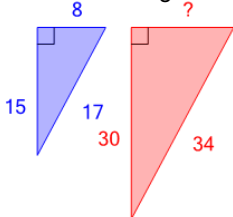


(not to scale)

A	B	C
10	1	15
D	E	F
6	11	2

5

Find the length of the missing side given that these are similar triangles

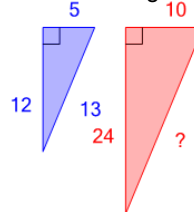


(not to scale)

A	B	C
16	19	13
D	E	F
9	12	11

6

Find the length of the missing side given that these are similar triangles

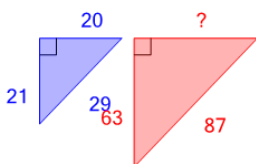


(not to scale)

A	B	C
26	16	40
D	E	F
44	36	8

7

Find the length of the missing side given that these are similar triangles

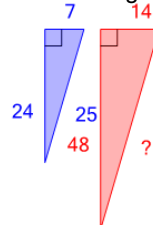


(not to scale)

A	B	C
30	60	72
D	E	F
84	54	66

8

Find the length of the missing side given that these are similar triangles



(not to scale)

A	B	C
35	80	75
D	E	F
15	50	70