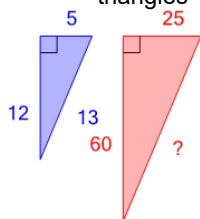




Pythagorean Triple Pairs - Solve Hypotenuse

**1**

Find the length of the missing side given that these are similar triangles

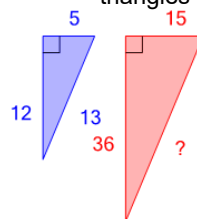


(not to scale)

A	B	C
65	95	17
D	E	F
29	71	23

2

Find the length of the missing side given that these are similar triangles

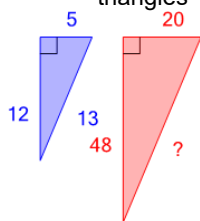


(not to scale)

A	B	C
60	33	18
D	E	F
39	66	30

3

Find the length of the missing side given that these are similar triangles

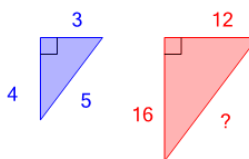


(not to scale)

A	B	C
32	22	92
D	E	F
52	72	7

4

Find the length of the missing side given that these are similar triangles

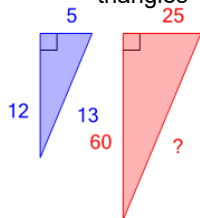


(not to scale)

A	B	C
10	26	14
D	E	F
24	6	20

5

Find the length of the missing side given that these are similar triangles

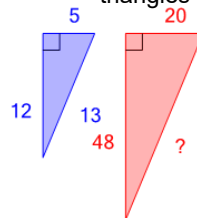


(not to scale)

A	B	C
77	89	71
D	E	F
59	65	53

6

Find the length of the missing side given that these are similar triangles

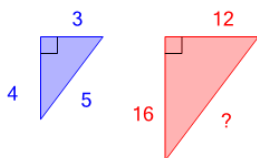


(not to scale)

A	B	C
12	52	17
D	E	F
22	87	57

7

Find the length of the missing side given that these are similar triangles

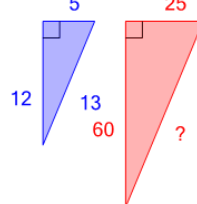


(not to scale)

A	B	C
20	22	10
D	E	F
18	4	34

8

Find the length of the missing side given that these are similar triangles



(not to scale)

A	B	C
17	65	47
D	E	F
89	101	119