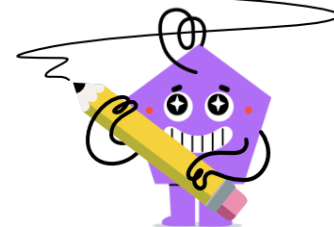
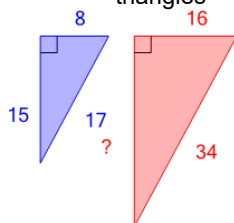




Pythagorean Triple Pairs - Solve Side

**1**

Find the length of the missing side given that these are similar triangles

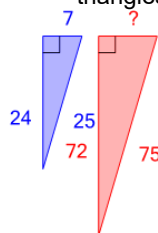


(not to scale)

A	B	C
9	27	48
D	E	F
51	36	30

2

Find the length of the missing side given that these are similar triangles

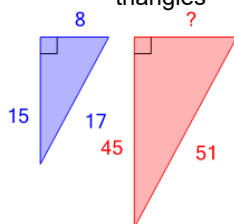


(not to scale)

A	B	C
17	13	15
D	E	F
21	25	3

3

Find the length of the missing side given that these are similar triangles

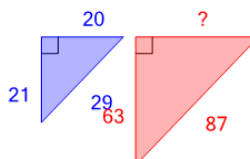


(not to scale)

A	B	C
38	12	6
D	E	F
8	24	10

4

Find the length of the missing side given that these are similar triangles

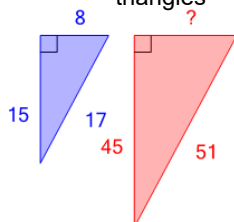


(not to scale)

A	B	C
60	78	6
D	E	F
36	54	24

5

Find the length of the missing side given that these are similar triangles

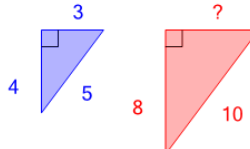


(not to scale)

A	B	C
40	20	14
D	E	F
42	10	24

6

Find the length of the missing side given that these are similar triangles

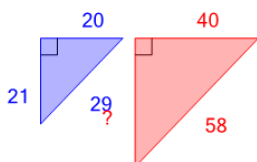


(not to scale)

A	B	C
3	13	10
D	E	F
5	6	9

7

Find the length of the missing side given that these are similar triangles

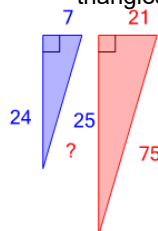


(not to scale)

A	B	C
50	42	14
D	E	F
2	10	18

8

Find the length of the missing side given that these are similar triangles



(not to scale)

A	B	C
100	72	30
D	E	F
121	107	86