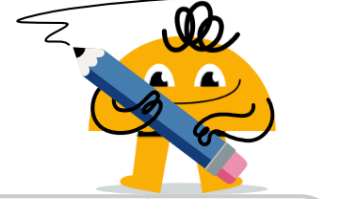
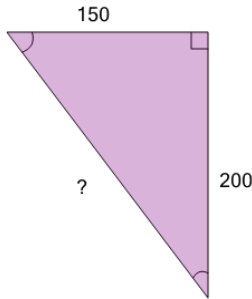




## Pythagorean Triples (Scaled) - Either Missing Length

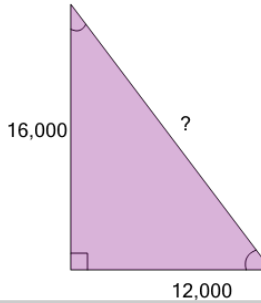


**1** Find the length of the missing side as a decimal value based on the Pythagorean theorem



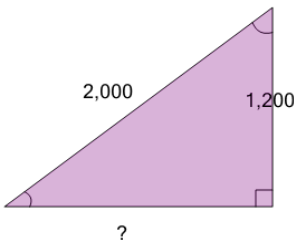
A	B	C
230	240	350
D	E	F
250	130	220

**2** Find the length of the missing side as a decimal value based on the Pythagorean theorem



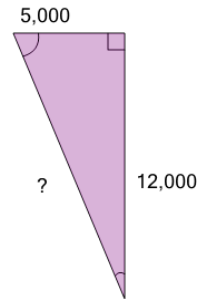
A	B
192,000	22,000
C	D
18,000	21,000
E	F
23,000	20,000

**3** Find the length of the missing side as a decimal value based on the Pythagorean theorem



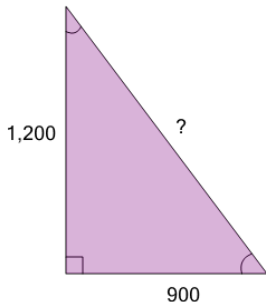
A	B
1,600	800
C	D
1,400	1,800
E	F
24,000	3,200

**4** Find the length of the missing side as a decimal value based on the Pythagorean theorem



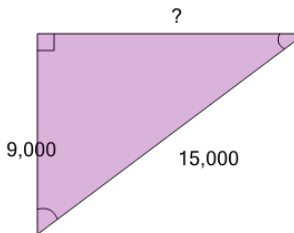
A	B
12,000	60,000
C	D
11,000	16,000
E	F
13,000	15,000

**5** Find the length of the missing side as a decimal value based on the Pythagorean theorem



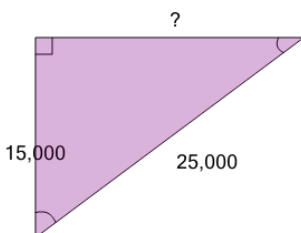
A	B	C
1,100	1,200	1,500
D	E	F
1,300	800	1,800

**6** Find the length of the missing side as a decimal value based on the Pythagorean theorem



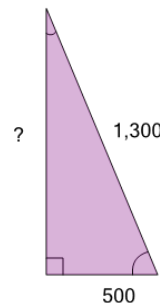
A	B
17,000	7,000
C	D
135,000	12,000
E	F
24,000	11,000

**7** Find the length of the missing side as a decimal value based on the Pythagorean theorem



A	B
20,000	12,000
C	D
40,000	375,000
E	F
15,000	28,000

**8** Find the length of the missing side as a decimal value based on the Pythagorean theorem



A	B	C
1,200	1,500	1,600
D	E	F
1,300	1,100	1,800