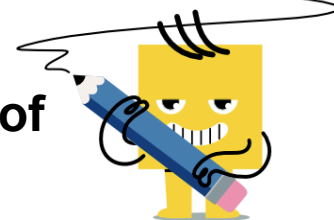
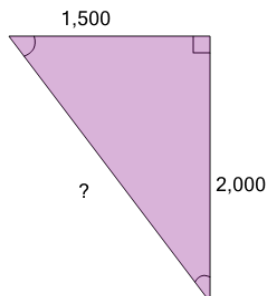




Pythagorean Triples (Scaled) - Length of Hypotenuse

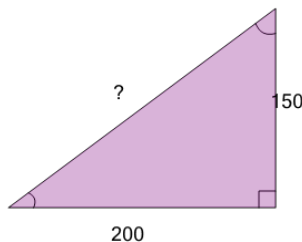


1 Find the length of the missing side as a decimal value based on the Pythagorean theorem



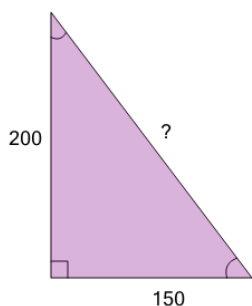
A	B
30,000	2,300
C	D
2,800	2,100
E	F
3,500	2,500

2 Find the length of the missing side as a decimal value based on the Pythagorean theorem



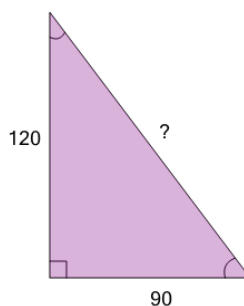
A	B	C
250	230	240
D	E	F
280	3,000	350

3 Find the length of the missing side as a decimal value based on the Pythagorean theorem



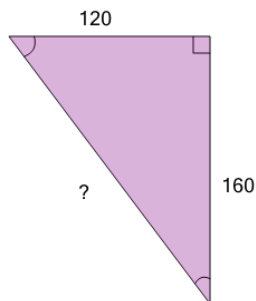
A	B	C
280	130	270
D	E	F
240	3,000	250

4 Find the length of the missing side as a decimal value based on the Pythagorean theorem



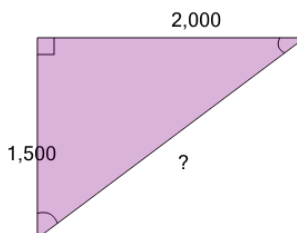
A	B	C
140	120	150
D	E	F
160	110	180

5 Find the length of the missing side as a decimal value based on the Pythagorean theorem



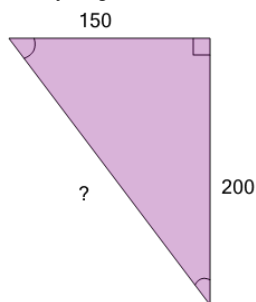
A	B	C
110	190	210
D	E	F
170	220	200

6 Find the length of the missing side as a decimal value based on the Pythagorean theorem



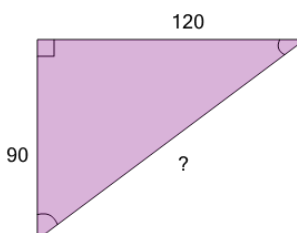
A	B	C
2,500	2,200	2,700
D	E	F
2,800	2,300	2,400

7 Find the length of the missing side as a decimal value based on the Pythagorean theorem



A	B	C
280	260	130
D	E	F
250	220	350

8 Find the length of the missing side as a decimal value based on the Pythagorean theorem



A	B	C
120	1,080	150
D	E	F
80	180	140