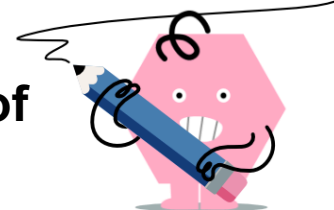




Pythagorean Triples - Example to Set of Side Lengths (Scaled)



1 Find another set of integer side lengths for a right triangle

(not to scale)

A	25, 40, 51	B	27, 42, 46
C	19, 48, 52	D	20, 44, 50
E	25, 40, 50	F	24, 45, 51

2 Find another set of integer side lengths for a right triangle

(not to scale)

A	14, 48, 50	B	19, 47, 47
C	16, 47, 54	D	15, 45, 49
E	15, 40, 44	F	14, 46, 49

3 Find another set of integer side lengths for a right triangle

(not to scale)

A	19, 73, 77	B	23, 67, 67
C	16, 74, 77	D	21, 72, 75
E	19, 67, 77	F	21, 67, 70

4 Find another set of integer side lengths for a right triangle

(not to scale)

A	40, 42, 58	B	37, 38, 62
C	41, 41, 50	D	39, 41, 53
E	35, 40, 56	F	37, 43, 58

5 Find another set of integer side lengths for a right triangle

(not to scale)

A	57, 59, 88	B	63, 67, 89
C	60, 61, 90	D	60, 63, 87
E	56, 63, 85	F	59, 63, 91

6 Find another set of integer side lengths for a right triangle

(not to scale)

A	16, 30, 34	B	11, 33, 34
C	19, 25, 30	D	20, 25, 32
E	14, 32, 33	F	16, 32, 32