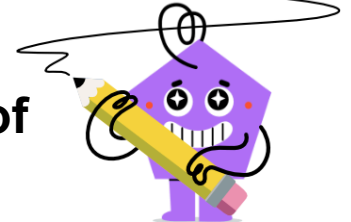


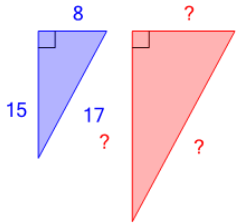


## Pythagorean Triples - Example to Set of Side Lengths



**1**

Find another set of integer side lengths for a right triangle



(not to scale)

A

14, 30, 33

B

18, 30, 34

C

16, 30, 34

D

20, 28, 35

E

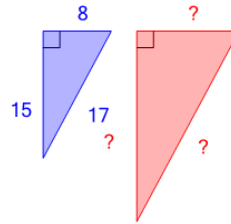
12, 28, 33

F

17, 26, 33

**2**

Find another set of integer side lengths for a right triangle



(not to scale)

A

27, 49, 54

B

21, 46, 47

C

20, 44, 50

D

23, 44, 55

E

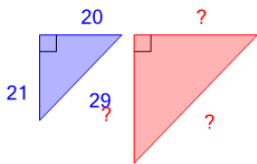
23, 42, 51

F

24, 45, 51

**3**

Find another set of integer side lengths for a right triangle



(not to scale)

A

42, 45, 61

B

40, 40, 59

C

42, 45, 55

D

37, 45, 54

E

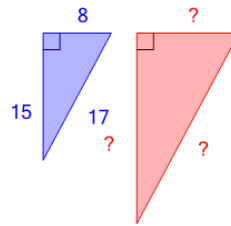
38, 41, 57

F

40, 42, 58

**4**

Find another set of integer side lengths for a right triangle



(not to scale)

A

20, 32, 35

B

17, 26, 30

C

14, 25, 30

D

20, 31, 35

E

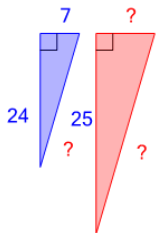
16, 30, 34

F

11, 27, 31

**5**

Find another set of integer side lengths for a right triangle



(not to scale)

A

10, 52, 53

B

16, 47, 48

C

14, 48, 50

D

12, 43, 53

E

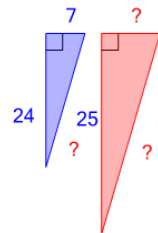
10, 43, 52

F

14, 44, 51

**6**

Find another set of integer side lengths for a right triangle



(not to scale)

A

14, 48, 50

B

8, 45, 53

C

15, 51, 52

D

12, 45, 46

E

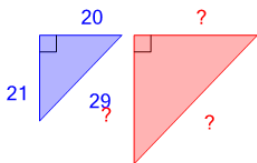
12, 47, 48

F

15, 47, 51

**7**

Find another set of integer side lengths for a right triangle



(not to scale)

A

60, 63, 87

B

56, 65, 88

C

58, 65, 89

D

63, 67, 89

E

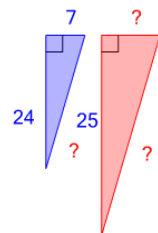
58, 61, 87

F

59, 60, 85

**8**

Find another set of integer side lengths for a right triangle



(not to scale)

A

21, 72, 75

B

20, 41, 43

C

23, 69, 78

D

18, 72, 76

E

16, 71, 74

F

24, 74, 79