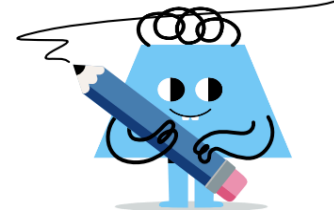
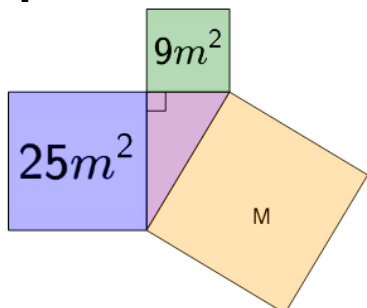




Pythagorean Theorem - Triangle with Squares Image to Area Calculation



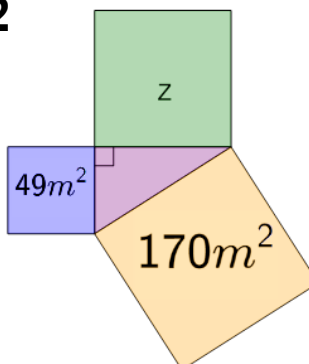
1



Find the area of square M based on the Pythagorean theorem

A	B
$M = 34m^2$	$M = 16m^2$

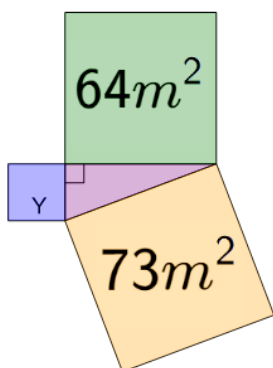
2



Find the area of square Z based on the Pythagorean theorem

A	B
$Z = 121m^2$	$Z = 219m^2$

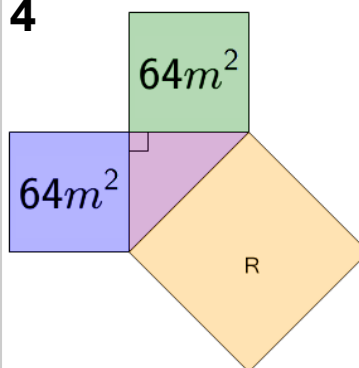
3



Find the area of square Y based on the Pythagorean theorem

A	B
$Y = 9m^2$	$Y = 137m^2$

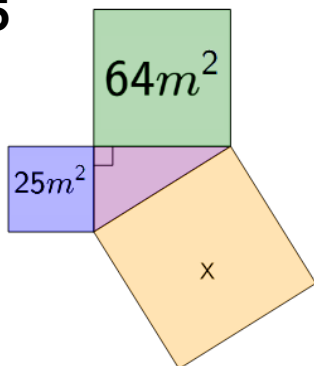
4



Find the area of square R based on the Pythagorean theorem

A	B
$R = 0m^2$	$R = 128m^2$

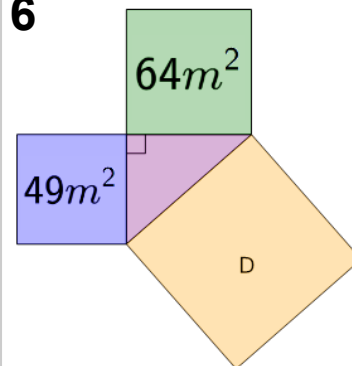
5



Find the area of square X based on the Pythagorean theorem

A	B
$X = 89m^2$	$X = 39m^2$

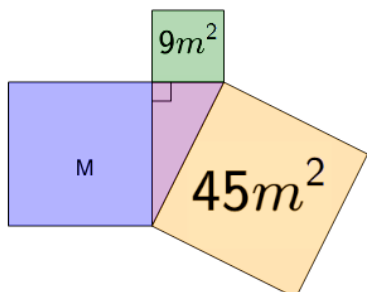
6



Find the area of square D based on the Pythagorean theorem

A	B
$D = 15m^2$	$D = 113m^2$

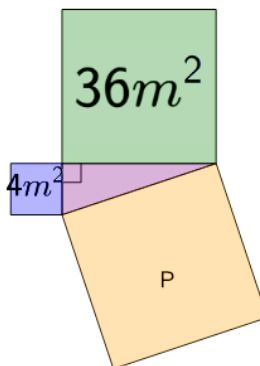
7



Find the area of square M based on the Pythagorean theorem

A	B
$M = 54m^2$	$M = 36m^2$

8



Find the area of square P based on the Pythagorean theorem

A	B
$P = 40m^2$	$P = 32m^2$