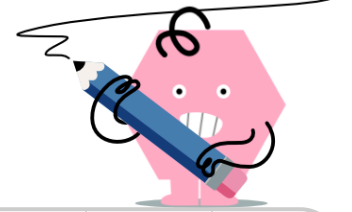




Radicals - Divide Monomials (Values Only)



1 Divide the radical expressions and simplify the answer $\frac{\sqrt{63}}{\sqrt{28}}$	A $\frac{3}{2}$ B $\frac{3\sqrt{2}}{4}$ C 4	2 Divide the radical expressions and simplify the answer $\frac{\sqrt{28}}{\sqrt{63}}$	A $\frac{2}{3}$ B $\frac{1}{2}$ C $\frac{4}{3}$
3 Divide the radical expressions and simplify the answer $\frac{\sqrt{27}}{\sqrt{75}}$	A 5 B 1 C $\frac{1}{4}$	4 Divide the radical expressions and simplify the answer $\frac{\sqrt{28}}{\sqrt{112}}$	A 3 B $\frac{2\sqrt{3}}{3}$ C $\frac{1}{2}$
5 Divide the radical expressions and simplify the answer $\frac{\sqrt{45}}{\sqrt{80}}$	A 2 B 1 C $\frac{3}{4}$	6 Divide the radical expressions and simplify the answer $\frac{\sqrt{45}}{\sqrt{20}}$	A 3 B $\frac{1}{2}$ C $\frac{1}{4}$
7 Divide the radical expressions and simplify the answer $\frac{\sqrt{50}}{\sqrt{32}}$	A 5 B $\frac{5}{4}$ C $\frac{3}{4}$	8 Divide the radical expressions and simplify the answer $\frac{\sqrt{18}}{\sqrt{32}}$	A 1 B $\frac{3}{4}$ C $\frac{1}{4}$