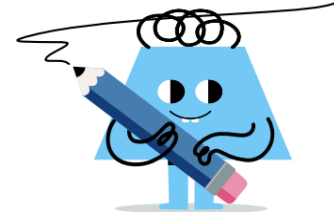




Ratios - Unit Rates, Solve for Rate

**1**

What is the wage in \$/hr?

total hours: 10 hrs
total earnings: 7.5 \$

A	0.5 \$/hr	B	0.75 \$/hr
C	1.5 \$/hr	D	1.75 \$/hr

2

What is the wage in \$/hr?

total earnings: 7 \$
total hours: 1 hrs

A	8.75 \$/hr	B	7 \$/hr
C	5.5 \$/hr	D	5 \$/hr

3

What is the wage in \$/hr?

total hours: 1 hrs
total earnings: 10 \$

A	11.25 \$/hr	B	10 \$/hr
C	8.25 \$/hr	D	9.75 \$/hr

4

What is the unit price in \$/kg?

total weight: 12 kg
total cost: 15 \$

A	1.75 \$/kg	B	1.25 \$/kg
C	1.5 \$/kg	D	0.5 \$/kg

5

What is the wage in \$/hr?

total hours: 3 hrs
total earnings: 13.5 \$

A	2.75 \$/hr	B	6 \$/hr
C	5.5 \$/hr	D	4.5 \$/hr

6

What is the unit price in \$/kg?

total weight: 1.5 kg
total cost: 15 \$

A	8.25 \$/kg	B	10 \$/kg
C	10.5 \$/kg	D	9.25 \$/kg

7

What is the wage in \$/hr?

total earnings: 5 \$
total hours: 2.5 hrs

A	1.5 \$/hr	B	2 \$/hr
C	3.5 \$/hr	D	0.75 \$/hr

8

What is the unit price in \$/kg?

total weight: 8 kg
total cost: 6 \$

A	0.75 \$/kg	B	1 \$/kg
C	0.5 \$/kg	D	0.25 \$/kg