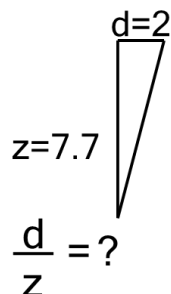




Ratios of Lengths - Both Lengths to Ratio, Decimal Numbers - Right Angle

Line Display

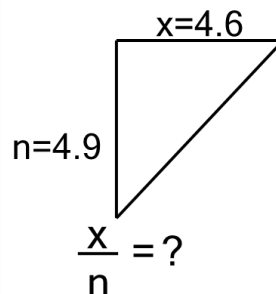
1



Solve for the ratio of lengths of line d over line z

A	1.851	B	0.26
C	0.14	D	1.516
E	0.54	F	0.06

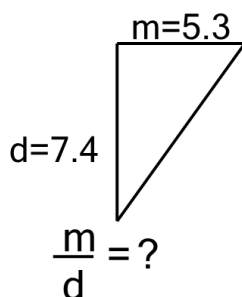
2



Solve for the ratio of lengths of line x over line n

A	0.739	B	1.539
C	1.339	D	0.747
E	0.575	F	0.939

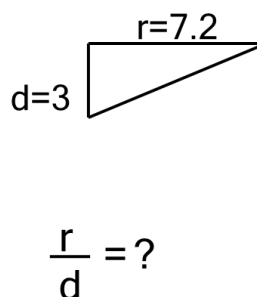
3



Solve for the ratio of lengths of line m over line d

A	1.396	B	1.316
C	8.605	D	3.524
E	0.116	F	0.716

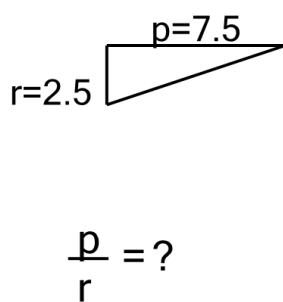
4



Solve for the ratio of lengths of line r over line d

A	0.75	B	0.536
C	0.341	D	0.313
E	1.067	F	2.4

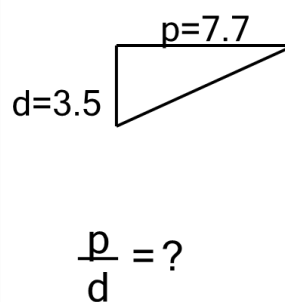
5



Solve for the ratio of lengths of line p over line r

A	0.5	B	2.667
C	3	D	4.333
E	3.667	F	4

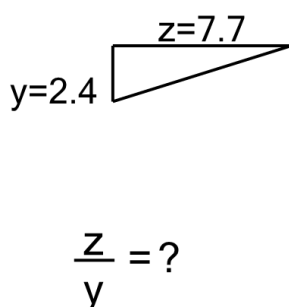
6



Solve for the ratio of lengths of line p over line d

A	2.2	B	1.467
C	0.372	D	0.818
E	0.978	F	0.455

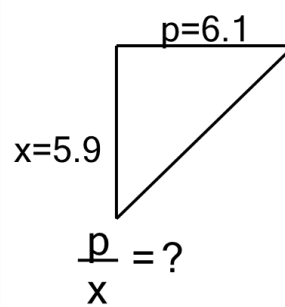
7



Solve for the ratio of lengths of line z over line y

A	0.561	B	4.278
C	0.216	D	2.852
E	0.312	F	3.208

8



Solve for the ratio of lengths of line p over line x

A	0.834	B	0.612
C	0.634	D	1.034
E	1.199	F	0.81