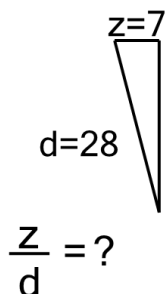




Ratios of Lengths - Both Lengths to Ratio, Whole Numbers - Angle Line Display

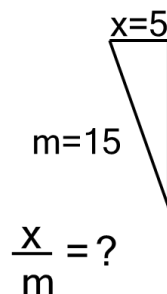
1



Solve for the ratio of lengths of line z over line d

A	0.15	B	0.75
C	4	D	0.25
E	1.33	F	20

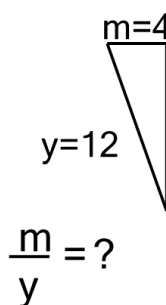
2



Solve for the ratio of lengths of line x over line m

A	0.73	B	1.36
C	0.33	D	1.13
E	0.88	F	0.53

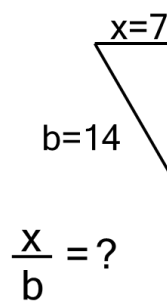
3



Solve for the ratio of lengths of line y over line m

A	3	B	0.43
C	0.23	D	0.6
E	0.33	F	4

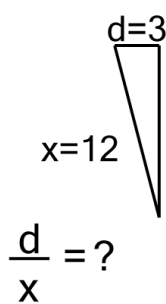
4



Solve for the ratio of lengths of line b over line x

A	0.75	B	1.78
C	1.13	D	2.67
E	0.56	F	2

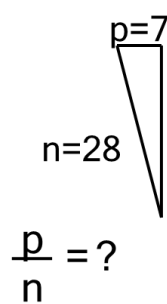
5



Solve for the ratio of lengths of line x over line d

A	0.56	B	2.67
C	0.28	D	5.78
E	3.56	F	4

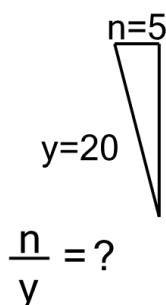
6



Solve for the ratio of lengths of line n over line p

A	2.22	B	5.33
C	0.28	D	0.23
E	0.38	F	4

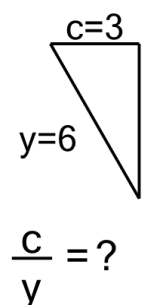
7



Solve for the ratio of lengths of line y over line n

A	0.19	B	3.56
C	4.89	D	5.78
E	2.22	F	4

8



Solve for the ratio of lengths of line y over line c

A	0.35	B	1.11
C	0.56	D	0.41
E	0.5	F	2