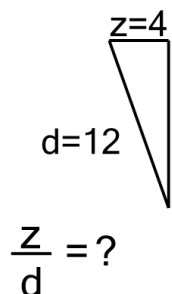




Ratios of Lengths - Both Lengths to Ratio, Whole Numbers - Angle Line Display

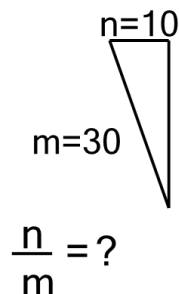
1



Solve for the ratio of lengths of line d over line z

A	3	B	4.33
C	2.33	D	0.33
E	3.67	F	0.75

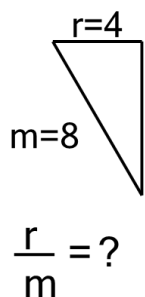
2



Solve for the ratio of lengths of line n over line m

A	0.93	B	0.33
C	2.14	D	0.88
E	3.75	F	0.47

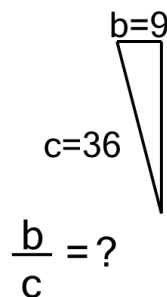
3



Solve for the ratio of lengths of line r over line m

A	0.77	B	2
C	0.1	D	0.5
E	1.11	F	1.43

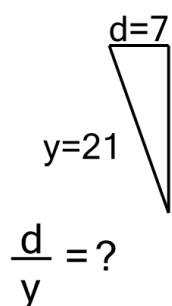
4



Solve for the ratio of lengths of line b over line c

A	0.75	B	0.85
C	0.05	D	4
E	1.82	F	0.25

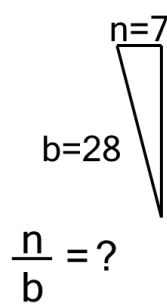
5



Solve for the ratio of lengths of line d over line y

A	0.33	B	0.93
C	1.5	D	1.36
E	1.07	F	3

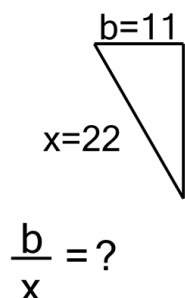
6



Solve for the ratio of lengths of line b over line n

A	0.32	B	0.17
C	2.22	D	4
E	3.11	F	2.67

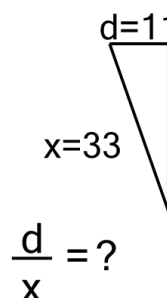
7



Solve for the ratio of lengths of line x over line b

A	0.75	B	0.38
C	0.35	D	2
E	0.5	F	0.89

8



Solve for the ratio of lengths of line x over line d

A	0.38	B	1.67
C	0.75	D	0.6
E	0.25	F	3