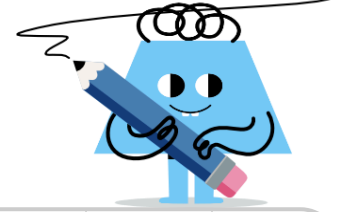




Roman Numeral Basics - To Normal



1 Convert the number from Roman Numerals to normal numbers. This number is made by adding a 1 symbol to the 5 symbol.

VI

A	B	C
4	15	14
D	E	F
12	6	5

2 Convert the number from Roman Numerals to normal numbers. This number is made of two of the symbol for 1000.

MM

A	B	C
2108	1825	2000
D	E	F
2130	1973	2231

3 Convert the number from Roman Numerals to normal numbers. This number is made of two of the symbol for 100.

CC

A	B	C
222	213	178
D	E	F
217	200	230

4 Convert the number from Roman Numerals to normal numbers. This number is made of two of the symbol for 1.

II

A	B	C
5	4	2
D	E	F
8	1	9

5 Convert the number from Roman Numerals to normal numbers. This number is made of two of the symbol for 10.

XX

A	B	C
20	29	23
D	E	F
14	21	27

6 Convert the number from Roman Numerals to normal numbers. This number is made by adding a 10 symbols to the 50 symbol.

LX

A	B	C
50	56	68
D	E	F
53	55	60

7 Convert the number from Roman Numerals to normal numbers. This number is made by adding a 100 symbols to the 500 symbol.

DC

A	B	C
583	607	600
D	E	F
579	608	563