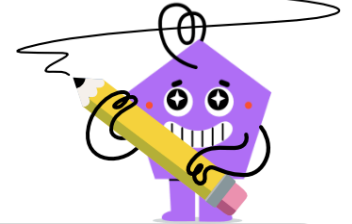
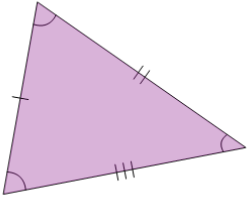


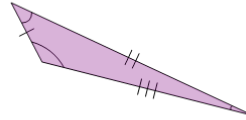


Sum of Inside Angles on a Shape

**1**

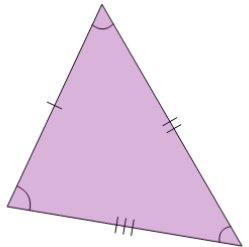
What would the sum of the inside angles on this shape be?

A	360°	B	300°
C	270°	D	330°
E	180°	F	150°

2

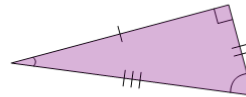
What would the sum of the inside angles on this shape be?

A	210°	B	330°
C	60°	D	180°
E	270°	F	240°

3

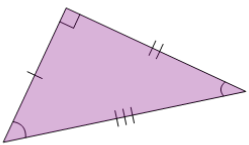
What would the sum of the inside angles on this shape be?

A	300°	B	270°
C	120°	D	210°
E	180°	F	90°

4

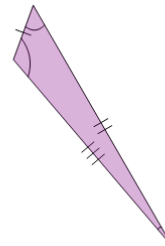
What would the sum of the inside angles on this shape be?

A	330°	B	270°
C	90°	D	210°
E	180°	F	120°

5

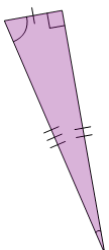
What would the sum of the inside angles on this shape be?

A	330°	B	270°
C	90°	D	180°
E	360°	F	240°

6

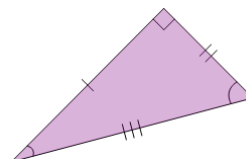
What would the sum of the inside angles on this shape be?

A	180°	B	120°
C	270°	D	90°
E	240°	F	150°

7

What would the sum of the inside angles on this shape be?

A	210°	B	180°
C	330°	D	240°
E	60°	F	120°

8

What would the sum of the inside angles on this shape be?

A	240°	B	60°
C	360°	D	150°
E	210°	F	180°