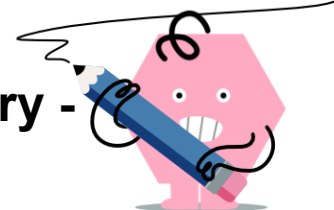




2D Shape (Picture) Rotational Symmetry - Which is Symmetric



1

Which of these pictures has rotation symmetry?

A



B



2

Which of these pictures has rotation symmetry?

A



B



3

Which of these pictures has rotation symmetry?

A



B



4

Which of these pictures has rotation symmetry?

A



B



5

Which of these pictures has rotation symmetry?

A



B



6

Which of these pictures has rotation symmetry?

A



B



7

Which of these pictures has rotation symmetry?

A



B



8

Which of these pictures has rotation symmetry?

A



B

