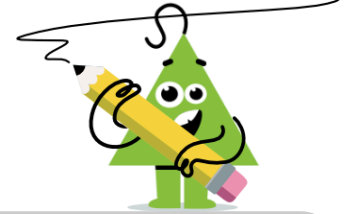
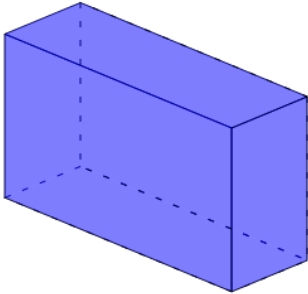


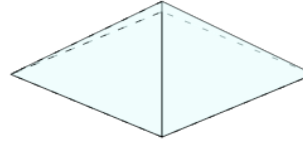


3D Shapes - Count Edges and Faces - First Time

**1**

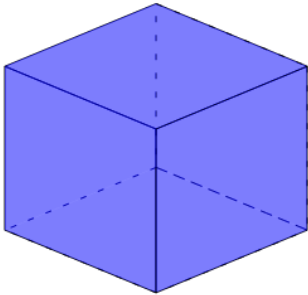
How many edges and faces does this shape have?

- A 10 Edges and 4 Faces
- B 12 Edges and 6 Faces

2

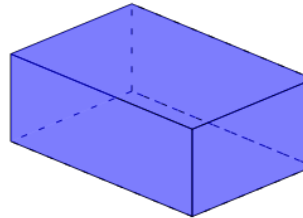
How many edges and faces does this shape have?

- A 8 Edges and 5 Faces
- B 6 Edges and 3 Faces

3

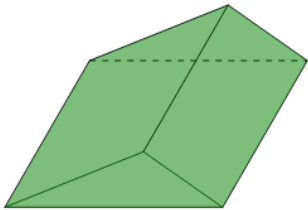
How many edges and faces does this shape have?

- A 12 Edges and 6 Faces
- B 13 Edges and 4 Faces

4

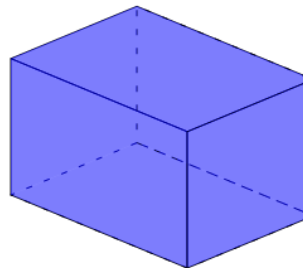
How many edges and faces does this shape have?

- A 10 Edges and 4 Faces
- B 12 Edges and 6 Faces

5

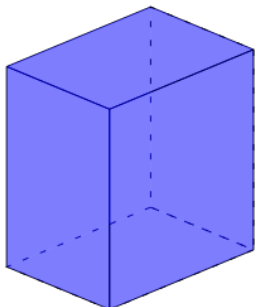
How many edges and faces does this shape have?

- A 9 Edges and 5 Faces
- B 9 Edges and 3 Faces

6

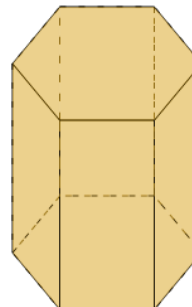
How many edges and faces does this shape have?

- A 12 Edges and 6 Faces
- B 12 Edges and 5 Faces

7

How many edges and faces does this shape have?

- A 12 Edges and 4 Faces
- B 12 Edges and 6 Faces

8

How many edges and faces does this shape have?

- A 16 Edges and 8 Faces
- B 18 Edges and 8 Faces