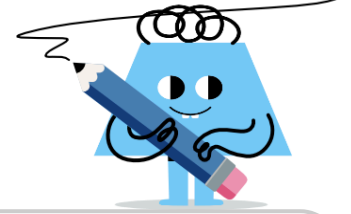
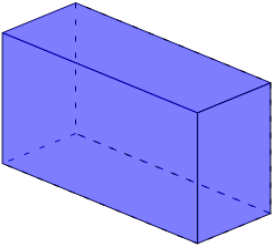




## 3D Shapes - Count Edges and Faces

**1**

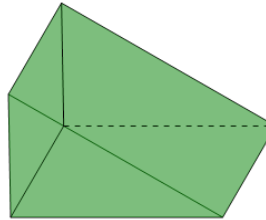
Count how many edges and faces this shape has



- A 13 edges, 6 faces
- B 10 edges, 7 faces
- C 11 edges, 4 faces
- D 12 edges, 7 faces
- E 10 edges, 5 faces
- F 12 edges, 6 faces

**2**

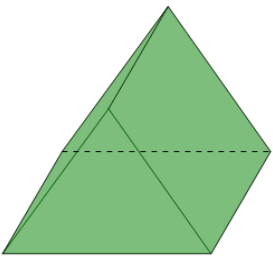
Count how many edges and faces this shape has



- A 10 edges, 6 faces
- B 7 edges, 3 faces
- C 9 edges, 6 faces
- D 10 edges, 3 faces
- E 9 edges, 5 faces
- F 8 edges, 6 faces

**3**

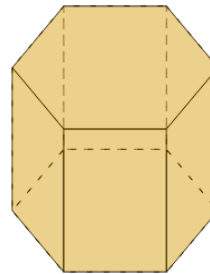
Count how many edges and faces this shape has



- A 10 edges, 5 faces
- B 8 edges, 6 faces
- C 10 edges, 4 faces
- D 9 edges, 5 faces
- E 10 edges, 6 faces
- F 8 edges, 4 faces

**4**

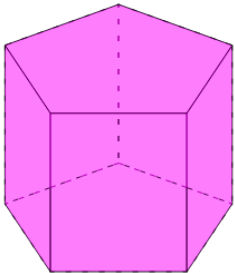
Count how many edges and faces this shape has



- A 19 edges, 7 faces
- B 18 edges, 8 faces
- C 19 edges, 8 faces
- D 18 edges, 6 faces
- E 16 edges, 9 faces
- F 17 edges, 9 faces

**5**

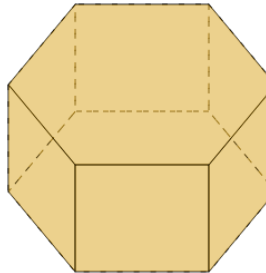
Count how many edges and faces this shape has



- A 14 edges, 7 faces
- B 13 edges, 8 faces
- C 16 edges, 8 faces
- D 15 edges, 6 faces
- E 15 edges, 7 faces
- F 16 edges, 5 faces

**6**

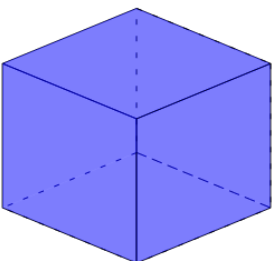
Count how many edges and faces this shape has



- A 18 edges, 8 faces
- B 17 edges, 8 faces
- C 16 edges, 8 faces
- D 18 edges, 7 faces
- E 16 edges, 7 faces
- F 17 edges, 6 faces

**7**

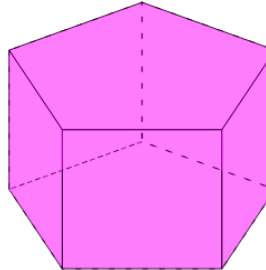
Count how many edges and faces this shape has



- A 10 edges, 5 faces
- B 13 edges, 6 faces
- C 10 edges, 7 faces
- D 12 edges, 4 faces
- E 12 edges, 7 faces
- F 12 edges, 6 faces

**8**

Count how many edges and faces this shape has



- A 14 edges, 7 faces
- B 15 edges, 5 faces
- C 15 edges, 7 faces
- D 16 edges, 5 faces
- E 13 edges, 7 faces
- F 15 edges, 8 faces