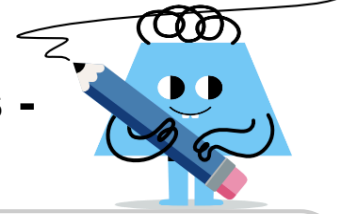
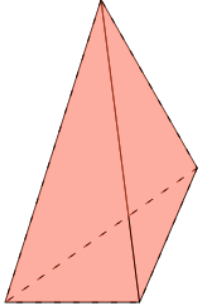




## 3D Shapes - Count Edges and Vertices - First Time



1

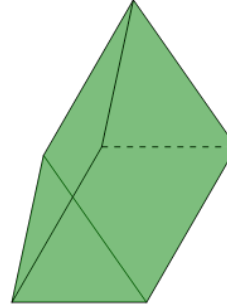


How many edges and vertices (corners) does this shape have?

A 6 Edges and 4 Vertices

B 6 Edges and 2 Vertices

2

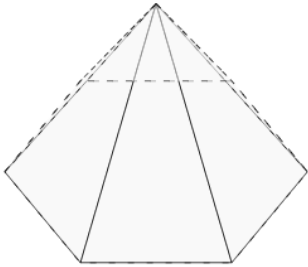


How many edges and vertices (corners) does this shape have?

A 7 Edges and 4 Vertices

B 9 Edges and 6 Vertices

3

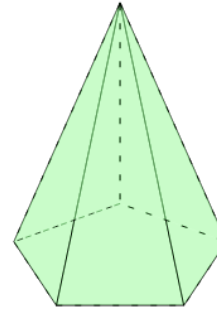


How many edges and vertices (corners) does this shape have?

A 10 Edges and 7 Vertices

B 12 Edges and 7 Vertices

4

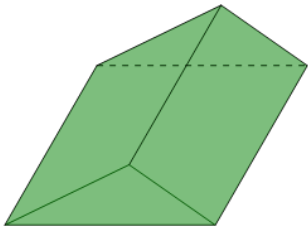


How many edges and vertices (corners) does this shape have?

A 10 Edges and 6 Vertices

B 10 Edges and 4 Vertices

5

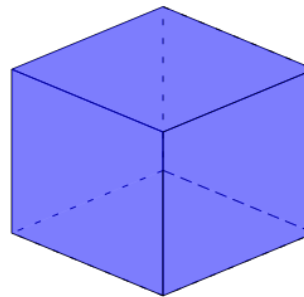


How many edges and vertices (corners) does this shape have?

A 9 Edges and 6 Vertices

B 8 Edges and 7 Vertices

6

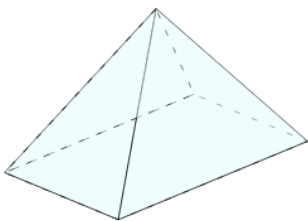


How many edges and vertices (corners) does this shape have?

A 12 Edges and 6 Vertices

B 12 Edges and 8 Vertices

7

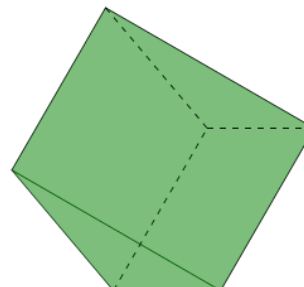


How many edges and vertices (corners) does this shape have?

A 9 Edges and 4 Vertices

B 8 Edges and 5 Vertices

8



How many edges and vertices (corners) does this shape have?

A 8 Edges and 6 Vertices

B 9 Edges and 6 Vertices