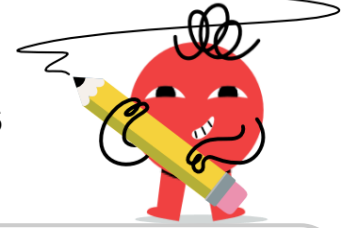
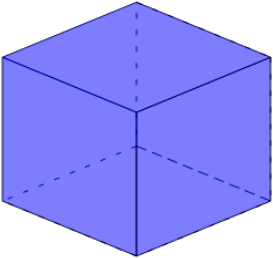




## 3D Shapes - Count Edges and Vertices

**1**

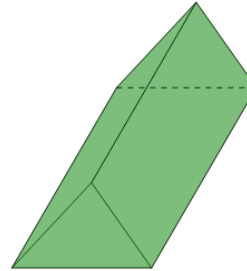
Count how many edges and vertices this shape has



- A 12 edges, 8 vertices
- B 13 edges, 9 vertices
- C 13 edges, 6 vertices
- D 11 edges, 8 vertices
- E 10 edges, 8 vertices
- F 11 edges, 6 vertices

**2**

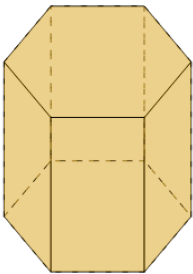
Count how many edges and vertices this shape has



- A 10 edges, 5 vertices
- B 9 edges, 4 vertices
- C 9 edges, 6 vertices
- D 9 edges, 7 vertices
- E 7 edges, 7 vertices
- F 8 edges, 6 vertices

**3**

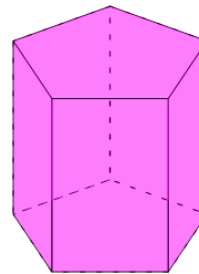
Count how many edges and vertices this shape has



- A 16 edges, 11 vertices
- B 18 edges, 13 vertices
- C 19 edges, 13 vertices
- D 18 edges, 12 vertices
- E 16 edges, 10 vertices
- F 18 edges, 10 vertices

**4**

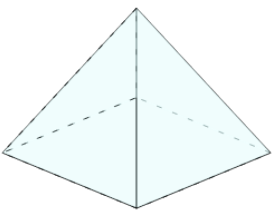
Count how many edges and vertices this shape has



- A 16 edges, 8 vertices
- B 14 edges, 8 vertices
- C 16 edges, 11 vertices
- D 15 edges, 10 vertices
- E 14 edges, 9 vertices
- F 13 edges, 8 vertices

**5**

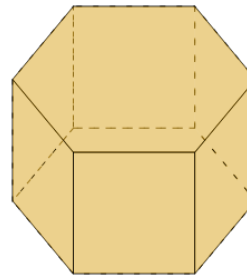
Count how many edges and vertices this shape has



- A 9 edges, 4 vertices
- B 7 edges, 4 vertices
- C 7 edges, 3 vertices
- D 8 edges, 5 vertices
- E 6 edges, 5 vertices
- F 6 edges, 6 vertices

**6**

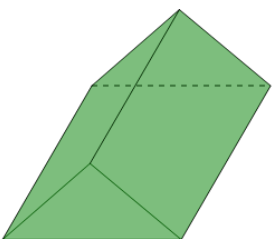
Count how many edges and vertices this shape has



- A 17 edges, 10 vertices
- B 19 edges, 13 vertices
- C 16 edges, 12 vertices
- D 18 edges, 13 vertices
- E 18 edges, 12 vertices
- F 19 edges, 12 vertices

**7**

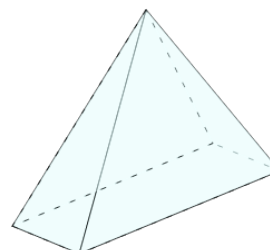
Count how many edges and vertices this shape has



- A 10 edges, 4 vertices
- B 10 edges, 7 vertices
- C 7 edges, 5 vertices
- D 8 edges, 6 vertices
- E 8 edges, 7 vertices
- F 9 edges, 6 vertices

**8**

Count how many edges and vertices this shape has



- A 8 edges, 5 vertices
- B 7 edges, 5 vertices
- C 9 edges, 4 vertices
- D 7 edges, 4 vertices
- E 6 edges, 5 vertices
- F 8 edges, 6 vertices