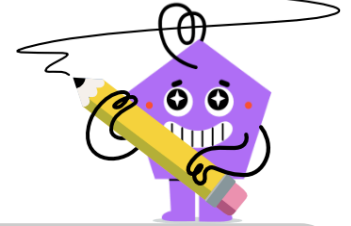
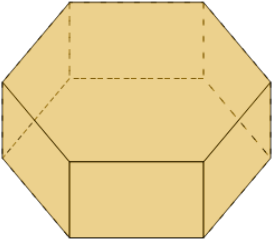




3D Shapes - Count Faces and Vertices

**1**

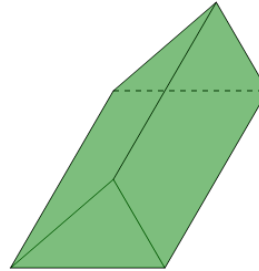
Count how many faces and vertices this shape has



- A 8 faces, 12 vertices
- B 8 faces, 13 vertices
- C 6 faces, 10 vertices
- D 7 faces, 10 vertices
- E 9 faces, 10 vertices
- F 6 faces, 13 vertices

2

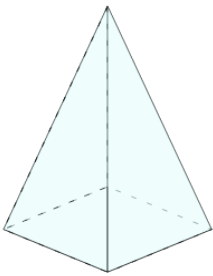
Count how many faces and vertices this shape has



- A 3 faces, 7 vertices
- B 5 faces, 4 vertices
- C 4 faces, 4 vertices
- D 6 faces, 5 vertices
- E 5 faces, 6 vertices
- F 6 faces, 7 vertices

3

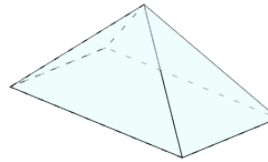
Count how many faces and vertices this shape has



- A 3 faces, 3 vertices
- B 6 faces, 6 vertices
- C 5 faces, 6 vertices
- D 4 faces, 4 vertices
- E 5 faces, 3 vertices
- F 5 faces, 5 vertices

4

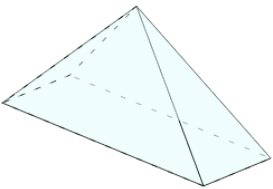
Count how many faces and vertices this shape has



- A 6 faces, 6 vertices
- B 4 faces, 4 vertices
- C 3 faces, 6 vertices
- D 4 faces, 5 vertices
- E 5 faces, 5 vertices
- F 4 faces, 6 vertices

5

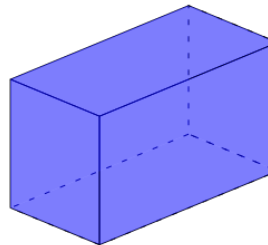
Count how many faces and vertices this shape has



- A 5 faces, 4 vertices
- B 3 faces, 5 vertices
- C 5 faces, 5 vertices
- D 3 faces, 6 vertices
- E 5 faces, 3 vertices
- F 4 faces, 6 vertices

6

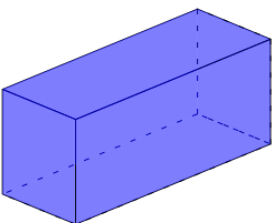
Count how many faces and vertices this shape has



- A 7 faces, 9 vertices
- B 4 faces, 7 vertices
- C 5 faces, 7 vertices
- D 6 faces, 8 vertices
- E 5 faces, 9 vertices
- F 7 faces, 6 vertices

7

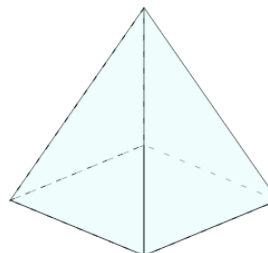
Count how many faces and vertices this shape has



- A 5 faces, 6 vertices
- B 4 faces, 8 vertices
- C 4 faces, 9 vertices
- D 6 faces, 8 vertices
- E 6 faces, 6 vertices
- F 5 faces, 7 vertices

8

Count how many faces and vertices this shape has



- A 4 faces, 3 vertices
- B 3 faces, 6 vertices
- C 3 faces, 4 vertices
- D 5 faces, 5 vertices
- E 6 faces, 4 vertices
- F 4 faces, 6 vertices