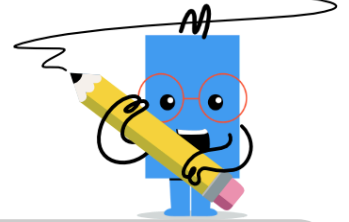
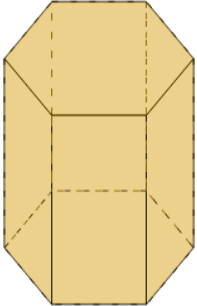




3D Shapes - Count Faces - First Time

**1**

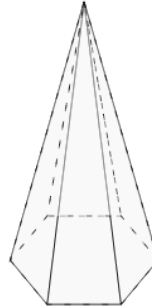
How many faces does this shape have?

A

9 Faces

B

8 Faces

2

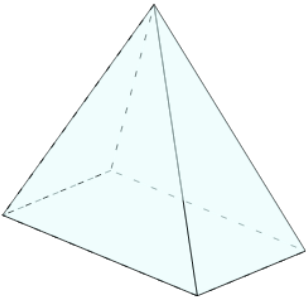
How many faces does this shape have?

A

7 Faces

B

5 Faces

3

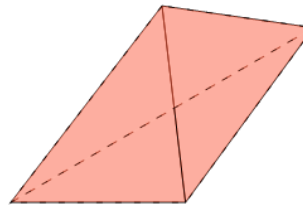
How many faces does this shape have?

A

5 Faces

B

6 Faces

4

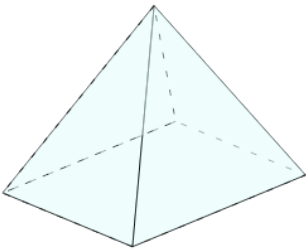
How many faces does this shape have?

A

2 Faces

B

4 Faces

5

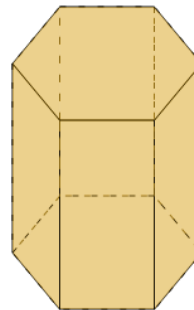
How many faces does this shape have?

A

5 Faces

B

6 Faces

6

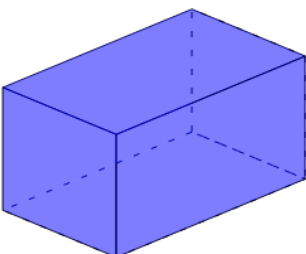
How many faces does this shape have?

A

8 Faces

B

6 Faces

7

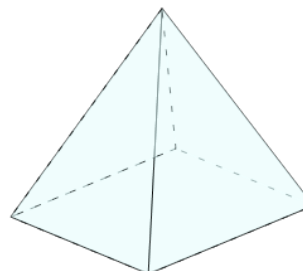
How many faces does this shape have?

A

5 Faces

B

6 Faces

8

How many faces does this shape have?

A

6 Faces

B

5 Faces