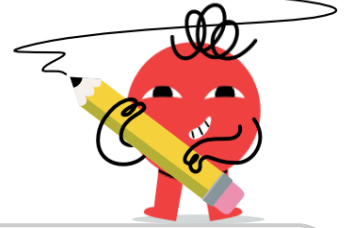


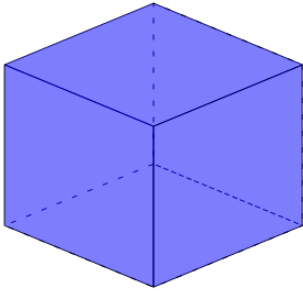


## 3D Shapes - Count Faces - Reversed

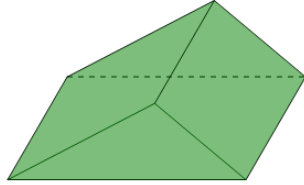
**1**Select the shape  
that is described

6 faces

A

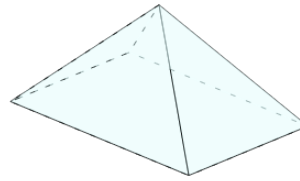


B

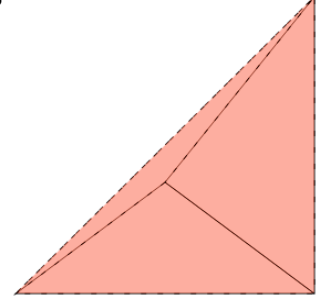
**2**Select the shape  
that is described

5 faces

A

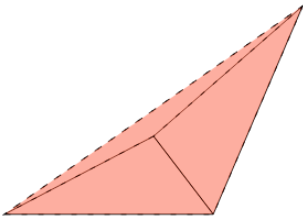


B

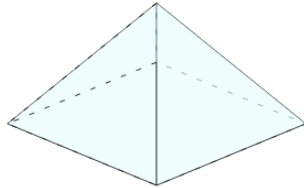
**3**Select the shape  
that is described

4 faces

A

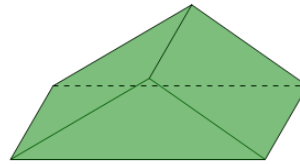


B

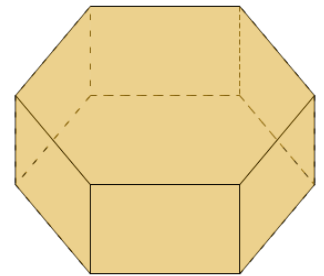
**4**Select the shape  
that is described

8 faces

A

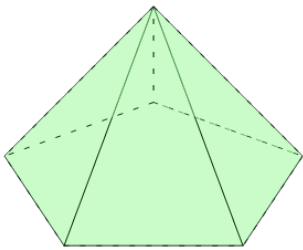


B

**5**Select the shape  
that is described

7 faces

A



B

