



3D Shapes - Rotation - Is Pair Valid



1

Is the second shape a rotation of the first?



A

B

yes

no

2

Is the second shape a rotation of the first?



A

B

yes

no

3

Is the second shape a rotation of the first?



A

B

yes

no

4

Is the second shape a rotation of the first?



A

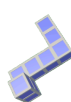
B

yes

no

5

Is the second shape a rotation of the first?



A

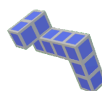
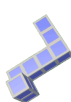
B

yes

no

6

Is the second shape a rotation of the first?



A

B

yes

no

7

Is the second shape a rotation of the first?



A

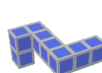
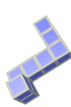
B

yes

no

8

Is the second shape a rotation of the first?



A

B

yes

no