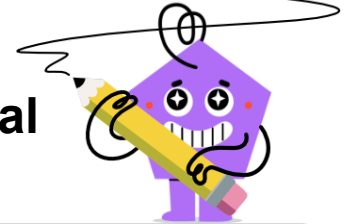




Quadrilaterals - Is Shape of a Type (Real World)



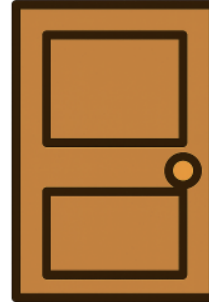
1



Is this object a Trapezoid (a four-sided shape with a pair of parallel sides of different lengths)?

A	B
No	Yes

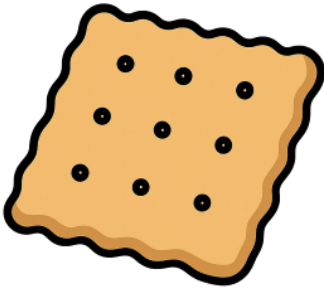
2



Is this object a Trapezoid (a four-sided shape with a pair of parallel sides of different lengths)?

A	B
Yes	No

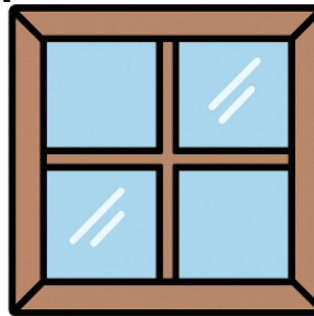
3



Is this object a Square (four sides of the same length, all at right angles)?

A	B
Yes	No

4



Is this object a Hexagon (six sides)?

A	B
Yes	No

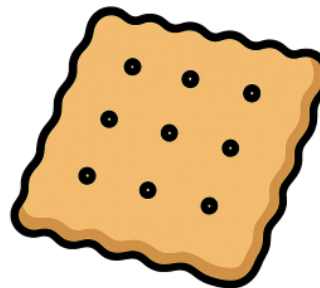
5



Is this object a Parallelogram (two pairs of parallel sides)?

A	B
No	Yes

6



Is this object a Circle (a line that is always the same distance from a center point)?

A	B
Yes	No

7



Is this object a Rhombus (four sides of the same length)?

A	B
Yes	No

8



Is this object a Rectangle (four sides, all at right angles)?

A	B
No	Yes