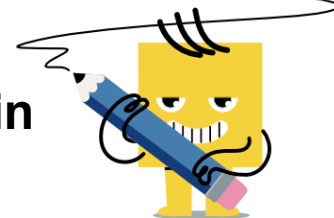




Speed - Person in Train - Solve for Train Speed



1 A person on a 60 m long train walks from the back to the front in 20 s. The person's speed relative to the ground is 8 m/s. How fast is the train going?

| | | |
|--------|-------|--------|
| A | B | C |
| 10 m/s | 5 m/s | 15 m/s |
| D | | |
| 20 m/s | | |

2 A person on a 40 m long train walks from the back to the front in 20 s. The person's speed relative to the ground is 8 m/s. How fast is the train going?

| | | |
|-------|--------|--------|
| A | B | C |
| 5 m/s | 26 m/s | 14 m/s |
| D | | |
| 6 m/s | | |

3 A person on a 30 m long train walks from the back to the front in 30 s. The person's speed relative to the ground is 4 m/s. How fast is the train going?

| | | |
|--------|-------|-------|
| A | B | C |
| 22 m/s | 3 m/s | 5 m/s |
| D | | |
| 12 m/s | | |

4 A person on a 40 m long train walks from the back to the front in 20 s. The person's speed relative to the ground is 6 m/s. How fast is the train going?

| | | |
|--------|--------|-------|
| A | B | C |
| 5 m/s | 21 m/s | 4 m/s |
| D | | |
| 11 m/s | | |

5 A person on a 60 m long train walks from the back to the front in 20 s. The person's speed relative to the ground is 9 m/s. How fast is the train going?

| | | |
|--------|--------|-------|
| A | B | C |
| 19 m/s | 26 m/s | 6 m/s |
| D | | |
| 16 m/s | | |

6 A person on a 30 m long train walks from the back to the front in 10 s. The person's speed relative to the ground is 9 m/s. How fast is the train going?

| | | |
|--------|--------|-------|
| A | B | C |
| 5 m/s | 21 m/s | 6 m/s |
| D | | |
| 19 m/s | | |

7 A person on a 60 m long train walks from the back to the front in 30 s. The person's speed relative to the ground is 7 m/s. How fast is the train going?

| | | |
|-------|--------|--------|
| A | B | C |
| 5 m/s | 20 m/s | 10 m/s |
| | | |
| | | |

8 A person on a 60 m long train walks from the back to the front in 20 s. The person's speed relative to the ground is 6 m/s. How fast is the train going?

| | | |
|--------|-------|--------|
| A | B | C |
| 23 m/s | 3 m/s | 13 m/s |
| D | | |
| 12 m/s | | |