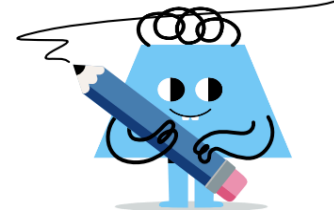




Speed - Train Past Platform - Solve for Train Length



1 A train going 5 m/s fully passes a 40 m platform in 20 s. How long is the train?

A	B	C	D
55 m	35 m	60 m	85 m

2 A train going 7 m/s fully passes a 10 m platform in 10 s. How long is the train?

A	B	C	D
85 m	40 m	80 m	60 m

3 A train going 5 m/s fully passes a 20 m platform in 10 s. How long is the train?

A	B	C	D
25 m	5 m	30 m	55 m

4 A train going 10 m/s fully passes a 50 m platform in 10 s. How long is the train?

A	B	C	D
60 m	50 m	45 m	35 m

5 A train going 6 m/s fully passes a 20 m platform in 10 s. How long is the train?

A	B	C	D
40 m	65 m	25 m	35 m

6 A train going 5 m/s fully passes a 10 m platform in 10 s. How long is the train?

A	B	C	D
40 m	30 m	45 m	50 m

7 A train going 7 m/s fully passes a 30 m platform in 10 s. How long is the train?

A	B	C	D
30 m	40 m	50 m	35 m

8 A train going 6 m/s fully passes a 10 m platform in 10 s. How long is the train?

A	B	C	D
40 m	55 m	30 m	50 m