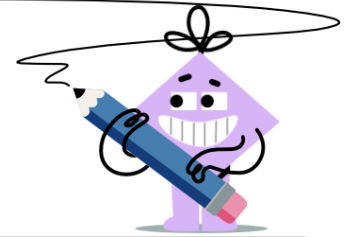




Speed - Which is Faster - Same Units



1 Bacteria A moves 4dam in 7d. Bacteria B moves 5dam in 7d. Which is faster?	A Bacteria A	B Bacteria B	2 Bug A crawls 4hm in 8d. Bug B crawls 5hm in 7d. Which is faster?		
				A Bug A	B Bug B
3 Bacteria A moves 3cm in 5hr. Bacteria B moves 2cm in 8hr. Which is faster?	A Bacteria A	B Bacteria B	4 Spaceship A flies 4dam in 7ms. Spaceship B flies 5dam in 6ms. Which is faster?		
				A Spaceship A	B Spaceship B
5 Bacteria A moves 2mm in 5hr. Bacteria B moves 4mm in 5hr. Which is faster?	A Bacteria A	B Bacteria B	6 Bug A crawls 2cm in 4s. Bug B crawls 3cm in 7s. Which is faster?		
				A Bug A	B Bug B
7 Bug A crawls 4dm in 7min. Bug B crawls 2dm in 6min. Which is faster?	A Bug A	B Bug B	8 Bacteria A moves 4dm in 6hr. Bacteria B moves 5dm in 5hr. Which is faster?		
				A Bacteria A	B Bacteria B