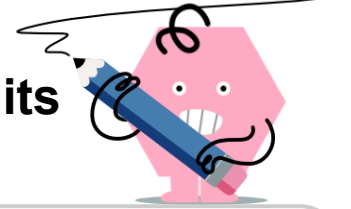




## Speed - Which is Less Time - Same Units



<b>1</b>  Bacteria A moves at 0.38dm/hr and goes 3dm. Bacteria B moves at 1.25dm/hr and goes 5dm. Which takes less time?	A  Bacteria A	B  Bacteria B	<b>2</b>  Bug A crawls at 0.29m/min and goes 2m. Bug B crawls at 0.63m/min and goes 5m. Which takes less time?	
			A  Bug A	B  Bug B
<b>3</b>  Bacteria A moves at 0.29mm/d and goes 2mm. Bacteria B moves at 0.4mm/d and goes 2mm. Which takes less time?	A  Bacteria A	B  Bacteria B	<b>4</b>  Bacteria A moves at 0.43mm/d and goes 3mm. Bacteria B moves at 0.75mm/d and goes 3mm. Which takes less time?	
			A  Bacteria A	B  Bacteria B
<b>5</b>  Bug A crawls at 0.5m/hr and goes 2m. Bug B crawls at 0.67m/hr and goes 4m. Which takes less time?	A  Bug A	B  Bug B	<b>6</b>  Bug A crawls at 0.6dam/hr and goes 3dam. Bug B crawls at 0.71dam/hr and goes 5dam. Which takes less time?	
			A  Bug A	B  Bug B
<b>7</b>  Horse A trots at 0.63dam/min and goes 5dam. Horse B trots at 0.33dam/min and goes 2dam. Which takes less time?	A  Horse A	B  Horse B	<b>8</b>  Bug A crawls at 0.71hm/d and goes 5hm. Bug B crawls at 0.67hm/d and goes 4hm. Which takes less time?	
			A  Bug A	B  Bug B