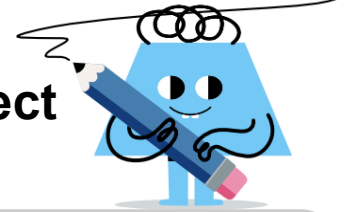




Square Root Approximation Near Perfect Square



1 What is a good approximation for the second square root? $\sqrt{64} = 8$ $\sqrt{67} \approx ?$	A 10.6	B 6.6	C 9.8
	D 9	E 7.4	F 8.2
2 What is a good approximation for the second square root? $\sqrt{100} = 10$ $\sqrt{96} \approx ?$	A 13	B 11.4	C 12.2
	D 9	E 7.4	F 9.8
3 What is a good approximation for the second square root? $\sqrt{121} = 11$ $\sqrt{123} \approx ?$	A 11.1	B 7.9	C 14.3
	D 9.5	E 10.3	F 13.5
4 What is a good approximation for the second square root? $\sqrt{144} = 12$ $\sqrt{142} \approx ?$	A 12.7	B 15.1	C 11.9
	D 9.5	E 11.1	F 14.3