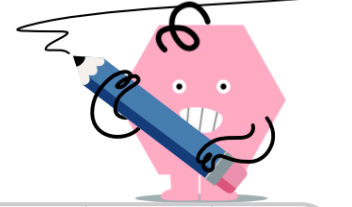




## Perfect Squares as Square of Number



1

How can this perfect square be represented as a squared integer?

169

A

$13^2$

B

$15^2$

C

$9^2$

D

$12^2$

E

$11^2$

F

$14^2$

2

How can this perfect square be represented as a squared integer?

36

A

$3^2$

B

$7^2$

C

$4^2$

D

$5^2$

E

$2^2$

F

$6^2$

3

How can this perfect square be represented as a squared integer?

144

A

$15^2$

B

$9^2$

C

$10^2$

D

$12^2$

E

$13^2$

F

$11^2$

4

How can this perfect square be represented as a squared integer?

81

A

$12^2$

B

$6^2$

C

$11^2$

D

$9^2$

E

$7^2$

F

$10^2$

5

How can this perfect square be represented as a squared integer?

64

A

$4^2$

B

$7^2$

C

$6^2$

D

$10^2$

E

$9^2$

F

$8^2$

6

How can this perfect square be represented as a squared integer?

100

A

$8^2$

B

$9^2$

C

$11^2$

D

$10^2$

E

$6^2$

F

$12^2$

7

How can this perfect square be represented as a squared integer?

121

A

$14^2$

B

$13^2$

C

$10^2$

D

$12^2$

E

$9^2$

F

$11^2$

8

How can this perfect square be represented as a squared integer?

25

A

$6^2$

B

$7^2$

C

$2^2$

D

$8^2$

E

$1^2$

F

$5^2$