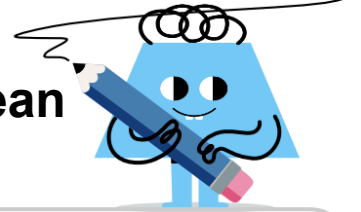




Statistics - Histograms - Median vs Mean to Skew



1 Given mean and median relationship, what is the skew? Mean > Median		2 Given mean and median relationship, what is the skew? Mean < Median	
A approximately symmetric	B right-skewed	A right-skewed	B approximately symmetric
C left-skewed		C left-skewed	
3 Given mean and median relationship, what is the skew? Mean = Median			
A approximately symmetric	B left-skewed		
C right-skewed			