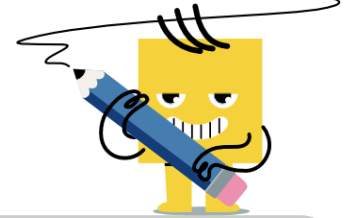




## Statistics - Mean with Value Missing



**1**

What is the missing number that results in these numbers having the given mean

0, 2, 25, 16, ?  
mean = 11

A	7	B	12
C	14	D	15
E	11	F	9

**2**

What is the missing number that results in these numbers having the given mean

8, ?, 2, 11, 8  
mean = 8

A	13	B	7
C	11	D	6
E	9	F	12

**3**

What is the missing number that results in these numbers having the given mean

3, 9, 3, ?, 6  
mean = 6

A	14	B	8
C	3	D	9
E	13	F	10

**4**

What is the missing number that results in these numbers having the given mean

2, 5, 24, ?, 11  
mean = 9

A	7	B	3
C	2	D	6
E	0	F	1

**5**

What is the missing number that results in these numbers having the given mean

?, 3, 11, 9, 4  
mean = 8

A	7	B	12
C	16	D	13
E	10	F	17

**6**

What is the missing number that results in these numbers having the given mean

5, 2, 14, 12, ?  
mean = 7

A	2	B	0
C	5	D	6
E	3	F	4

**7**

What is the missing number that results in these numbers having the given mean

14, 3, 25, 10, ?  
mean = 13

A	10	B	16
C	14	D	9
E	13	F	17

**8**

What is the missing number that results in these numbers having the given mean

5, 17, 16, 4, ?  
mean = 12

A	15	B	19
C	14	D	17
E	20	F	18