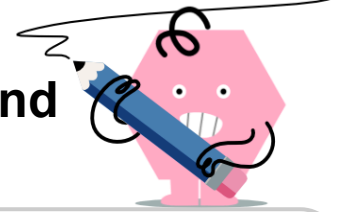




Statistics - Solve for Mean from Sum and Count

**1**

Solve the challenge

If 4 numbers add up to 20, what is the mean?

A	1	B	0.5
C	5	D	1.5
E	2.5	F	6.5

2

Solve the challenge

If 5 numbers add up to 25, what is the mean?

A	1.5	B	9
C	0.5	D	4
E	3.5	F	5

3

Solve the challenge

If 5 numbers add up to 20, what is the mean?

A	6.5	B	2
C	7.5	D	4
E	4.5	F	9.5

4

Solve the challenge

If 3 numbers add up to 15, what is the mean?

A	5.5	B	4
C	0.5	D	5
E	1.5	F	4.5

5

Solve the challenge

If 4 numbers add up to 24, what is the mean?

A	10.5	B	6
C	9	D	10
E	8	F	11

6

Solve the challenge

If 5 numbers add up to 30, what is the mean?

A	6	B	3.5
C	7	D	2
E	0.5	F	4.5