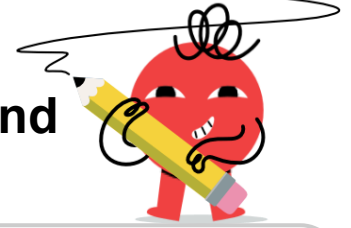




Statistics - Solve for Mean from Sum and Count

**1**

Solve the challenge

If 3 numbers add up to 33, what is the mean?

A	12	B	14
C	5	D	6.5
E	11	F	6

2

Solve the challenge

If 5 numbers add up to 45, what is the mean?

A	10	B	9
C	3	D	7
E	5.5	F	13.5

3

Solve the challenge

If 5 numbers add up to 40, what is the mean?

A	8	B	5.5
C	8.5	D	12
E	2.5	F	4

4

Solve the challenge

If 3 numbers add up to 18, what is the mean?

A	7	B	5.5
C	6	D	6.5
E	8	F	11.5

5

Solve the challenge

If 4 numbers add up to 24, what is the mean?

A	12	B	7
C	11	D	10
E	12.5	F	10.5

6

Solve the challenge

If 5 numbers add up to 35, what is the mean?

A	12	B	5
C	4	D	9.5
E	7	F	3

7

Solve the challenge

If 3 numbers add up to 24, what is the mean?

A	11	B	3
C	8	D	6
E	11.5	F	5

8

Solve the challenge

If 3 numbers add up to 15, what is the mean?

A	6.5	B	4.5
C	5	D	3
E	8.5	F	7.5