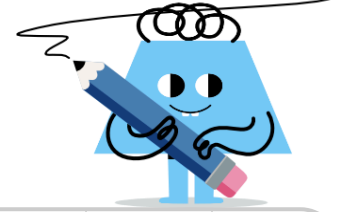
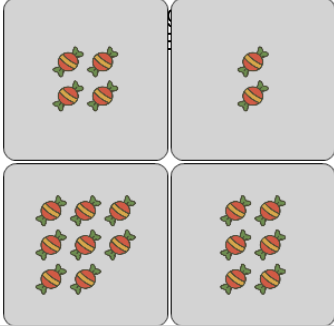




Statistics - Mean - Pictures to Concept

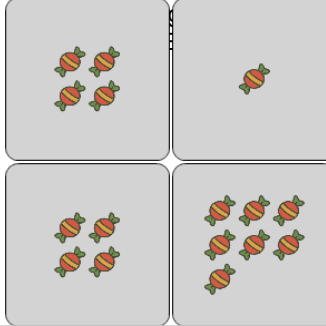


1 How many candies would be in each group if you rearranged them



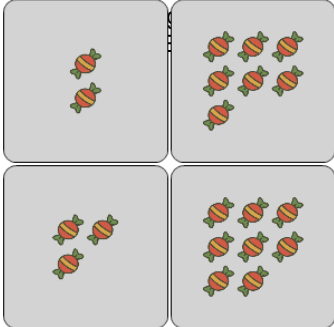
A	B	C
6	7	1
D	E	F
5	0	9

2 How many candies would be in each group if you rearranged them



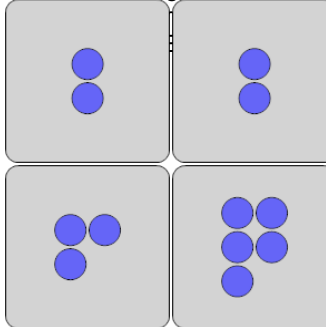
A	B	C
1	9	2
D	E	F
5	4	7

3 How many candies would be in each group if you rearranged them



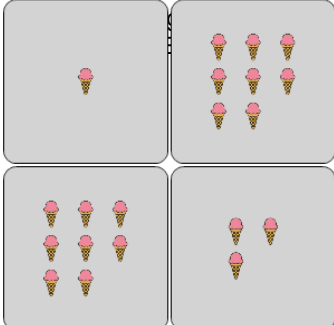
A	B	C
5	1	7
D	E	F
4	8	10

4 How many circles would be in each group if you rearranged them so



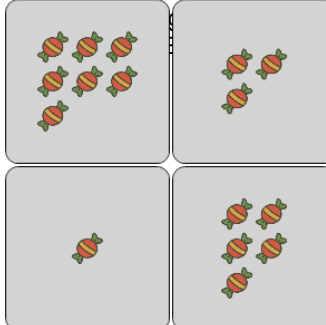
A	B	C
2	0	3
D	E	F
8	6	1

5 How many ice creams would be in each group if you rearranged them



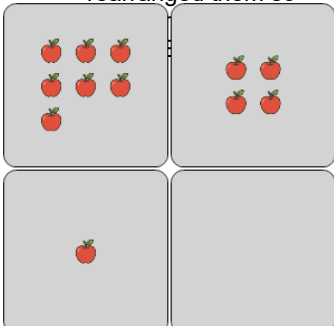
A	B	C
8	5	3
D	E	F
1	10	4

6 How many candies would be in each group if you rearranged them



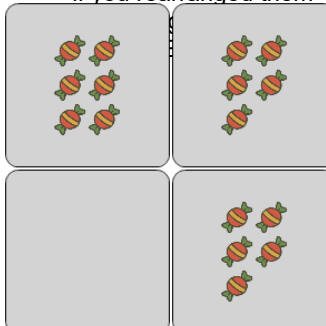
A	B	C
0	2	3
D	E	F
4	8	7

7 How many apples would be in each group if you rearranged them so



A	B	C
6	5	3
D	E	F
2	7	4

8 How many candies would be in each group if you rearranged them



A	B	C
1	4	9
D	E	F
2	8	7