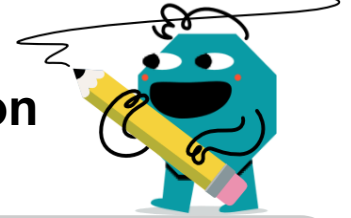




## Statistics - Solve for Mean - To Equation



**1** Choose the formula or guide for the mean of these numbers

12, 1, 2, 8, 7

A  $\frac{1\ 2\ 7\ 8\ 12}{\text{one } 12}$

B  $\frac{1\ 2\ 7\ 8\ 12}{12-1}$

C  $\frac{1\ 2\ 7\ 8\ 12}{\rightarrow\rightarrow\leftarrow\leftarrow}$

D  $\frac{12+1+2+8+7}{5}$

**2** Choose the formula or guide for the mean of these numbers

15, 12, 15, 1, 7

A  $\frac{1\ 7\ 12\ 15\ 15}{15-1}$

B  $\frac{15+12+15+1+7}{5}$

C  $\frac{1\ 7\ 12\ 15\ 15}{\rightarrow\rightarrow\leftarrow\leftarrow}$

D  $\frac{1\ 7\ 12\ 15\ 15}{\text{two } 15\text{s}}$

**3** Choose the formula or guide for the mean of these numbers

11, 4, 9, 1, 10

A  $\frac{1\ 4\ 9\ 10\ 11}{11-1}$

B  $\frac{1\ 4\ 9\ 10\ 11}{\rightarrow\rightarrow\leftarrow\leftarrow}$

C  $\frac{1\ 4\ 9\ 10\ 11}{\text{one } 11}$

D  $\frac{11+4+9+1+10}{5}$

**4** Choose the formula or guide for the mean of these numbers

5, 1, 7, 1, 1

A  $\frac{1\ 1\ 1\ 5\ 7}{7-1}$

B  $\frac{5+1+7+1+1}{5}$

C  $\frac{1\ 1\ 1\ 5\ 7}{\rightarrow\rightarrow\leftarrow\leftarrow}$

D  $\frac{1\ 1\ 1\ 5\ 7}{\text{three } 1\text{s}}$

**5** Choose the formula or guide for the mean of these numbers

7, 0, 10, 16, 7

A  $\frac{7+0+10+16+7}{5}$

B  $\frac{0\ 7\ 7\ 10\ 16}{\rightarrow\rightarrow\leftarrow\leftarrow}$

C  $\frac{0\ 7\ 7\ 10\ 16}{\text{two } 7\text{s}}$

D  $\frac{0\ 7\ 7\ 10\ 16}{16-0}$

**6** Choose the formula or guide for the mean of these numbers

4, 7, 3, 8, 3

A  $\frac{3\ 3\ 4\ 7\ 8}{\text{two } 3\text{s}}$

B  $\frac{3\ 3\ 4\ 7\ 8}{8-3}$

C  $\frac{4+7+3+8+3}{5}$

D  $\frac{3\ 3\ 4\ 7\ 8}{\rightarrow\rightarrow\leftarrow\leftarrow}$

**7** Choose the formula or guide for the mean of these numbers

7, 2, 12, 13, 6

A  $\frac{2\ 6\ 7\ 12\ 13}{\text{one } 7}$

B  $\frac{7+2+12+13+6}{5}$

C  $\frac{2\ 6\ 7\ 12\ 13}{\rightarrow\rightarrow\leftarrow\leftarrow}$

D  $\frac{2\ 6\ 7\ 12\ 13}{13-2}$

**8** Choose the formula or guide for the mean of these numbers

9, 3, 11, 16, 11

A  $\frac{3\ 9\ 11\ 11\ 16}{\text{two } 11\text{s}}$

B  $\frac{3\ 9\ 11\ 11\ 16}{16-3}$

C  $\frac{9+3+11+16+11}{5}$

D  $\frac{3\ 9\ 11\ 11\ 16}{\rightarrow\rightarrow\leftarrow\leftarrow}$