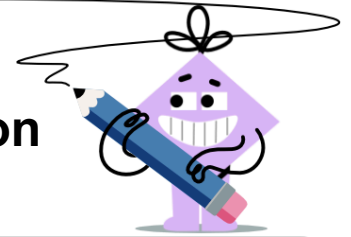




## Statistics - Solve for Mode - To Equation



**1** Choose the formula or guide for the mode of these numbers

7, 7, 5, 13, 9

A  $\frac{5 \ 7 \ 7 \ 9 \ 13}{\text{two } 7\text{s}}$

B  $\frac{5 \ 7 \ 7 \ 9 \ 13}{13 - 5}$

C  $\frac{5 \ 7 \ 7 \ 9 \ 13}{\rightarrow \rightarrow \leftarrow \leftarrow}$

D  $\frac{7 + 7 + 5 + 13 + 9}{5}$

**2** Choose the formula or guide for the mode of these numbers

12, 12, 12, 10

A  $\frac{10 \ 12 \ 12 \ 12}{\rightarrow \quad \quad \leftarrow}$

B  $\frac{10 \ 12 \ 12 \ 12}{\text{three } 12\text{s}}$

C  $\frac{12 + 12 + 12 + 10}{4}$

D  $\frac{10 \ 12 \ 12 \ 12}{12 - 10}$

**3** Choose the formula or guide for the mode of these numbers

13, 5, 10, 11, 11

A  $\frac{5 \ 10 \ 11 \ 11 \ 13}{13 - 5}$

B  $\frac{13 + 5 + 10 + 11 + 11}{5}$

C  $\frac{5 \ 10 \ 11 \ 11 \ 13}{\text{two } 11\text{s}}$

D  $\frac{5 \ 10 \ 11 \ 11 \ 13}{\rightarrow \quad \quad \leftarrow \leftarrow}$

**4** Choose the formula or guide for the mode of these numbers

8, 11, 13, 13

A  $\frac{8 \ 11 \ 13 \ 13}{\rightarrow \quad \quad \leftarrow}$

B  $\frac{8 + 11 + 13 + 13}{4}$

C  $\frac{8 \ 11 \ 13 \ 13}{\text{two } 13\text{s}}$

D  $\frac{8 \ 11 \ 13 \ 13}{13 - 8}$

**5** Choose the formula or guide for the mode of these numbers

12, 10, 12, 9, 14, 7

A  $\frac{7 \ 9 \ 10 \ 12 \ 12 \ 14}{\rightarrow \rightarrow \quad \quad \leftarrow \leftarrow}$

B  $\frac{7 \ 9 \ 10 \ 12 \ 12 \ 14}{\text{two } 12\text{s}}$

C  $\frac{12 + 10 + 12 + 9 + 14 + 7}{6}$

D  $\frac{7 \ 9 \ 10 \ 12 \ 12 \ 14}{14 - 7}$

**6** Choose the formula or guide for the mode of these numbers

8, 7, 7, 10, 14, 6

A  $\frac{6 \ 7 \ 7 \ 8 \ 10 \ 14}{\text{two } 7\text{s}}$

B  $\frac{6 \ 7 \ 7 \ 8 \ 10 \ 14}{\rightarrow \rightarrow \quad \quad \leftarrow \leftarrow}$

C  $\frac{8 + 7 + 7 + 10 + 14 + 6}{6}$

D  $\frac{6 \ 7 \ 7 \ 8 \ 10 \ 14}{14 - 6}$

**7** Choose the formula or guide for the mode of these numbers

13, 8, 9, 12, 7, 7

A  $\frac{13 + 8 + 9 + 12 + 7 + 7}{6}$

B  $\frac{7 \ 7 \ 8 \ 9 \ 12 \ 13}{\text{two } 7\text{s}}$

C  $\frac{7 \ 7 \ 8 \ 9 \ 12 \ 13}{\rightarrow \rightarrow \quad \quad \leftarrow \leftarrow}$

D  $\frac{7 \ 7 \ 8 \ 9 \ 12 \ 13}{13 - 7}$

**8** Choose the formula or guide for the mode of these numbers

8, 10, 6, 12, 10

A  $\frac{6 \ 8 \ 10 \ 10 \ 12}{12 - 6}$

B  $\frac{8 + 10 + 6 + 12 + 10}{5}$

C  $\frac{6 \ 8 \ 10 \ 10 \ 12}{\text{two } 10\text{s}}$

D  $\frac{6 \ 8 \ 10 \ 10 \ 12}{\rightarrow \rightarrow \quad \quad \leftarrow \leftarrow}$