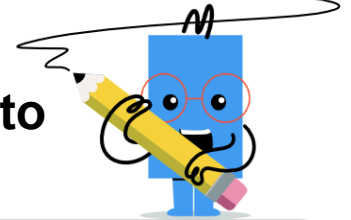
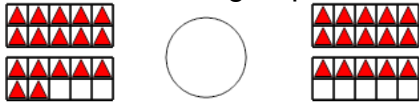




## Ten Groups - Compare, Less than 20 - to Words

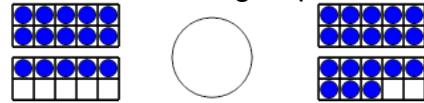


**1** Is the first ten group less than, greater than, or equal to the second ten group?



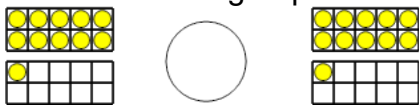
- |   |         |   |        |
|---|---------|---|--------|
| A | less    | B | equals |
| C | greater |   |        |

**2** Is the first ten group less than, greater than, or equal to the second ten group?



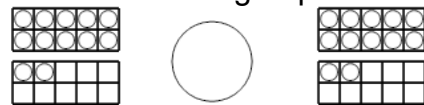
- |   |         |   |        |
|---|---------|---|--------|
| A | less    | B | equals |
| C | greater |   |        |

**3** Is the first ten group less than, greater than, or equal to the second ten group?



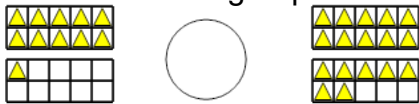
- |   |         |   |        |
|---|---------|---|--------|
| A | less    | B | equals |
| C | greater |   |        |

**4** Is the first ten group less than, greater than, or equal to the second ten group?



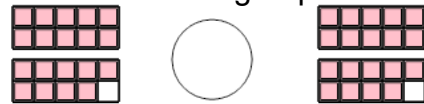
- |   |         |   |        |
|---|---------|---|--------|
| A | less    | B | equals |
| C | greater |   |        |

**5** Is the first ten group less than, greater than, or equal to the second ten group?



- |   |         |   |        |
|---|---------|---|--------|
| A | less    | B | equals |
| C | greater |   |        |

**6** Is the first ten group less than, greater than, or equal to the second ten group?



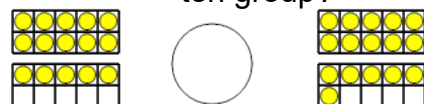
- |   |         |   |        |
|---|---------|---|--------|
| A | less    | B | equals |
| C | greater |   |        |

**7** Is the first ten group less than, greater than, or equal to the second ten group?



- |   |         |   |        |
|---|---------|---|--------|
| A | less    | B | equals |
| C | greater |   |        |

**8** Is the first ten group less than, greater than, or equal to the second ten group?



- |   |         |   |        |
|---|---------|---|--------|
| A | less    | B | equals |
| C | greater |   |        |