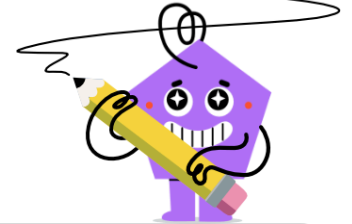
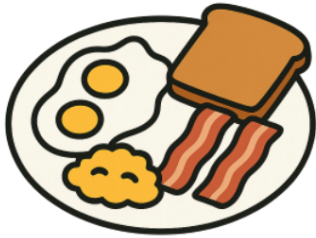




## Time - Approximate - Event to Words



1



breakfast

What time does breakfast usually happen?

- A zero oh five a.m.
- B half past seven a.m.

2



sunset

What time does sunset usually happen?

- A nine o'clock p.m.
- B ten oh five a.m.

3



afternoon break

What time does afternoon break usually happen?

- A one minutes to five a.m.
- B quarter to two p.m.

4



waking up

What time does waking up usually happen?

- A four twenty p.m.
- B quarter to seven a.m.

5



sunrise

What time does sunrise usually happen?

- A six o'clock a.m.
- B one twenty p.m.

6



morning break

What time does morning break usually happen?

- A twenty-five to two a.m.
- B half past ten a.m.

7



coming home

What time does coming home usually happen?

- A half past three p.m.
- B zero ten a.m.

8



bed time

What time does bed time usually happen?

- A two oh five a.m.
- B half past eight p.m.