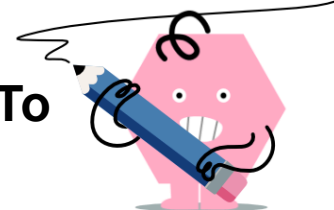
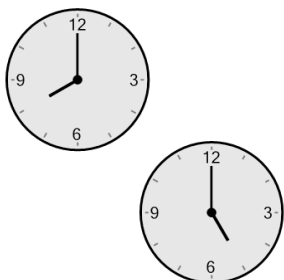




Time - Elapsed Negative - Two Clocks To Minutes - Full Hours

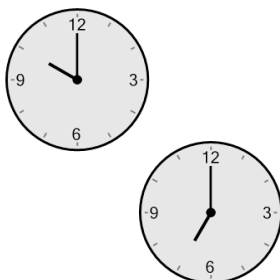


1 How many minutes earlier is the second clock?



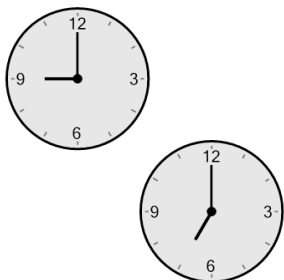
- | | | | |
|---|---------|---|---------|
| A | 195 min | B | 75 min |
| C | 180 min | D | 165 min |
| E | 300 min | F | 135 min |

2 How many minutes earlier is the second clock?



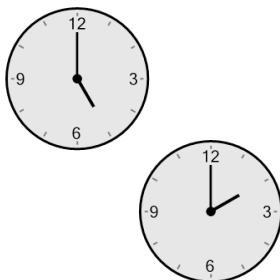
- | | | | |
|---|---------|---|---------|
| A | 60 min | B | 90 min |
| C | 270 min | D | 120 min |
| E | 300 min | F | 180 min |

3 How many minutes earlier is the second clock?



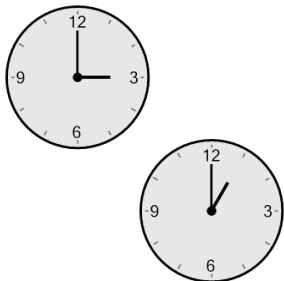
- | | | | |
|---|---------|---|--------|
| A | 180 min | B | 0 min |
| C | 135 min | D | 60 min |
| E | 120 min | F | 30 min |

4 How many minutes earlier is the second clock?



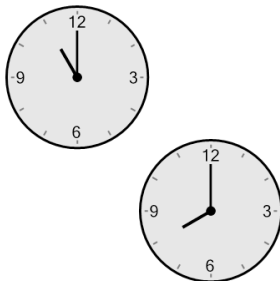
- | | | | |
|---|---------|---|---------|
| A | 240 min | B | 270 min |
| C | 300 min | D | 210 min |
| E | 180 min | F | 120 min |

5 How many minutes earlier is the second clock?



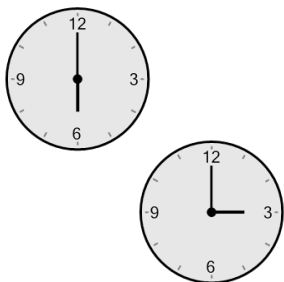
- | | | | |
|---|---------|---|---------|
| A | 180 min | B | 120 min |
| C | 300 min | D | 60 min |
| E | 165 min | F | 240 min |

6 How many minutes earlier is the second clock?



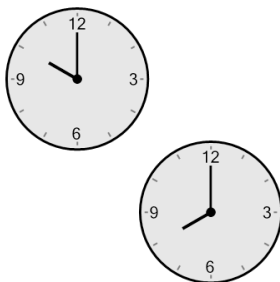
- | | | | |
|---|---------|---|---------|
| A | 135 min | B | 240 min |
| C | 225 min | D | 120 min |
| E | 180 min | F | 255 min |

7 How many minutes earlier is the second clock?



- | | | | |
|---|---------|---|---------|
| A | 60 min | B | 105 min |
| C | 180 min | D | 90 min |
| E | 165 min | F | 120 min |

8 How many minutes earlier is the second clock?



- | | | | |
|---|---------|---|---------|
| A | 300 min | B | 150 min |
| C | 120 min | D | 30 min |
| E | 0 min | F | 195 min |