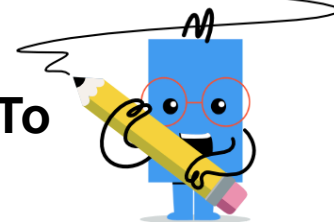
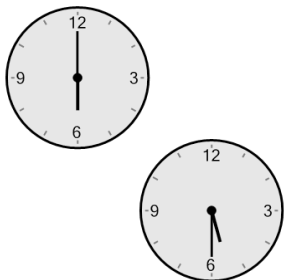




Time - Elapsed Negative - Two Clocks To Minutes - Half Hours

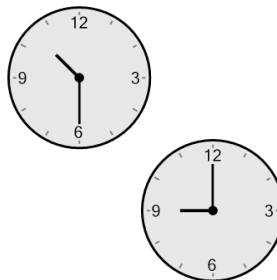


1 How many minutes earlier is the second clock?



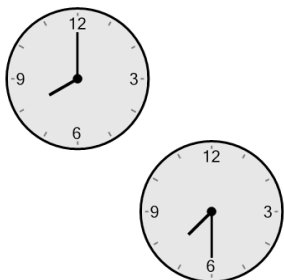
- | | |
|--------------|-------------|
| A
30 min | B
15 min |
| C
180 min | D
60 min |
| E
45 min | F
75 min |

2 How many minutes earlier is the second clock?



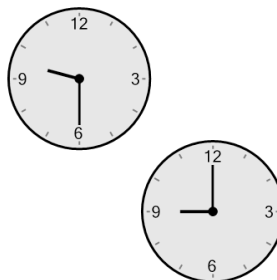
- | | |
|-------------|--------------|
| A
0 min | B
195 min |
| C
90 min | D
105 min |
| E
15 min | F
45 min |

3 How many minutes earlier is the second clock?



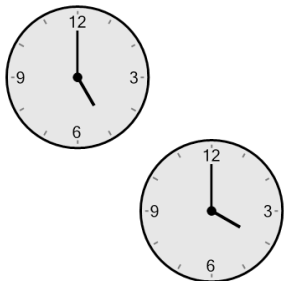
- | | |
|--------------|--------------|
| A
30 min | B
45 min |
| C
60 min | D
135 min |
| E
120 min | F
150 min |

4 How many minutes earlier is the second clock?



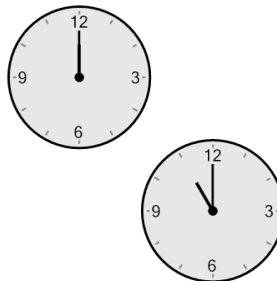
- | | |
|--------------|-------------|
| A
135 min | B
0 min |
| C
30 min | D
45 min |
| E
105 min | F
60 min |

5 How many minutes earlier is the second clock?



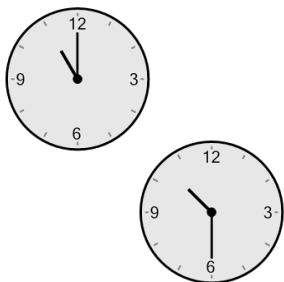
- | | |
|--------------|-------------|
| A
90 min | B
75 min |
| C
180 min | D
0 min |
| E
135 min | F
60 min |

6 How many minutes earlier is the second clock?



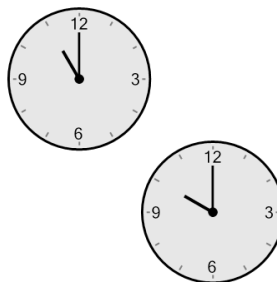
- | | |
|--------------|--------------|
| A
45 min | B
150 min |
| C
135 min | D
15 min |
| E
60 min | F
240 min |

7 How many minutes earlier is the second clock?



- | | |
|--------------|-------------|
| A
90 min | B
75 min |
| C
60 min | D
0 min |
| E
150 min | F
30 min |

8 How many minutes earlier is the second clock?



- | | |
|--------------|-------------|
| A
180 min | B
30 min |
| C
75 min | D
0 min |
| E
120 min | F
60 min |