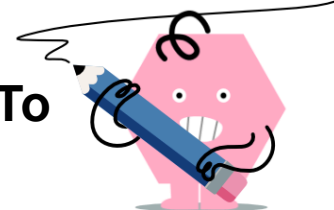
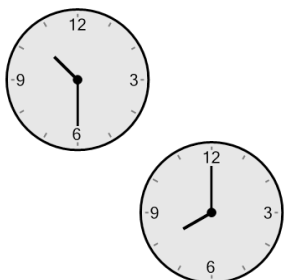




Time - Elapsed Negative - Two Clocks To Minutes - Half Hours

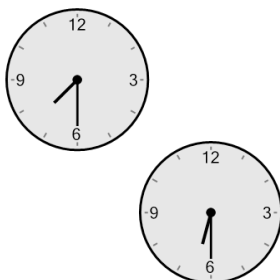


1 How many minutes earlier is the second clock?



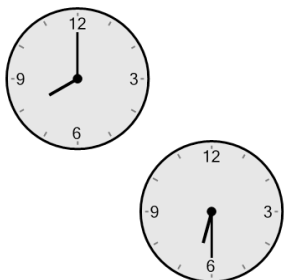
- | | |
|--------------|--------------|
| A
195 min | B
270 min |
| C
120 min | D
150 min |
| E
60 min | F
30 min |

2 How many minutes earlier is the second clock?



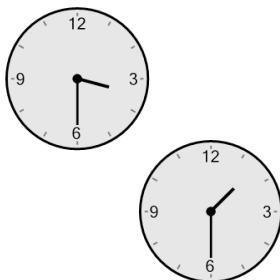
- | | |
|-------------|--------------|
| A
30 min | B
90 min |
| C
0 min | D
60 min |
| E
15 min | F
180 min |

3 How many minutes earlier is the second clock?



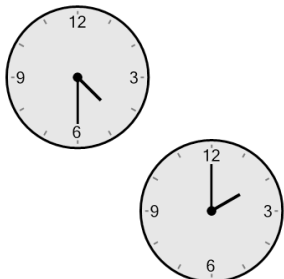
- | | |
|--------------|--------------|
| A
60 min | B
30 min |
| C
105 min | D
150 min |
| E
90 min | F
180 min |

4 How many minutes earlier is the second clock?



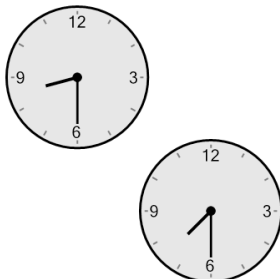
- | | |
|--------------|--------------|
| A
30 min | B
120 min |
| C
180 min | D
105 min |
| E
60 min | F
0 min |

5 How many minutes earlier is the second clock?



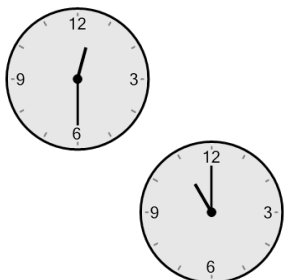
- | | |
|--------------|--------------|
| A
45 min | B
150 min |
| C
240 min | D
165 min |
| E
210 min | F
225 min |

6 How many minutes earlier is the second clock?



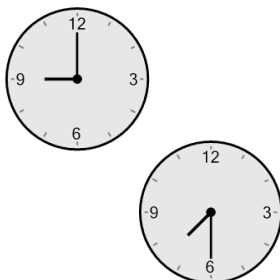
- | | |
|--------------|--------------|
| A
15 min | B
30 min |
| C
60 min | D
120 min |
| E
240 min | F
180 min |

7 How many minutes earlier is the second clock?



- | | |
|-------------|--------------|
| A
30 min | B
135 min |
| C
75 min | D
90 min |
| E
60 min | F
120 min |

8 How many minutes earlier is the second clock?



- | | |
|--------------|--------------|
| A
15 min | B
30 min |
| C
90 min | D
240 min |
| E
180 min | F
60 min |