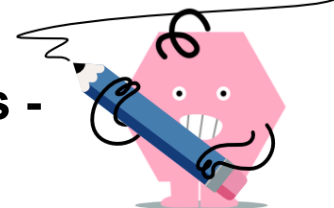




Time - Elapsed - Two Times To Minutes - Quarter Hours



1 How many minutes later is the second clock?

9:45 vs. 9:47

A	43 mins	B	2 mins
C	88 mins	D	73 mins
E	13 mins	F	58 mins

2 How many minutes later is the second clock?

2:15 vs. 3:17

A	43 mins	B	92 mins
C	62 mins	D	2 mins
E	13 mins	F	137 mins

3 How many minutes later is the second clock?

11:00 vs. 11:03

A	12 mins	B	18 mins
C	48 mins	D	3 mins
E	57 mins	F	93 mins

4 How many minutes later is the second clock?

8:45 vs. 8:47

A	73 mins	B	88 mins
C	62 mins	D	2 mins
E	103 mins	F	107 mins

5 How many minutes later is the second clock?

11:00 vs. 12:01

A	136 mins	B	14 mins
C	166 mins	D	61 mins
E	31 mins	F	1 min

6 How many minutes later is the second clock?

11:15 vs. 11:17

A	73 mins	B	17 mins
C	2 mins	D	92 mins
E	32 mins	F	28 mins

7 How many minutes later is the second clock?

8:45 vs. 8:46

A	14 mins	B	91 mins
C	1 min	D	29 mins
E	106 mins	F	46 mins

8 How many minutes later is the second clock?

4:00 vs. 6:01

A	121 mins	B	76 mins
C	91 mins	D	61 mins
E	31 mins	F	196 mins