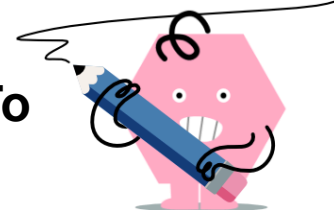




## Time - Elapsed Negative - Two Times To Hours & Minutes - Full Hours



**1**

How many hours and minutes earlier is the second clock?

6:00 vs. 5:00

A

4 hrs

B

0 hr

C

2 hrs 30 mins

D

3 hrs

E

1 hr

F

2 hrs

**2**

How many hours and minutes earlier is the second clock?

5:00 vs. 3:00

A

2 hrs

B

1 hr

C

1 hr 15 mins

D

3 hrs 45 mins

E

3 hrs

F

2 hrs 30 mins

**3**

How many hours and minutes earlier is the second clock?

8:00 vs. 5:00

A

1 hr

B

4 hrs

C

5 hrs

D

1 hr 45 mins

E

4 hrs 15 mins

F

3 hrs

**4**

How many hours and minutes earlier is the second clock?

10:00 vs. 8:00

A

3 hrs

B

1 hr

C

0 hr

D

2 hrs

E

5 hrs

F

4 hrs

**5**

How many hours and minutes earlier is the second clock?

12:00 vs. 11:00

A

0 hr

B

45 mins

C

1 hr

D

1 hr 45 mins

E

1 hr 15 mins

F

30 mins

**6**

How many hours and minutes earlier is the second clock?

11:00 vs. 9:00

A

1 hr 45 mins

B

3 hrs

C

2 hrs

D

0 hr

E

1 hr

F

45 mins

**7**

How many hours and minutes earlier is the second clock?

11:00 vs. 8:00

A

1 hr

B

2 hrs

C

5 hrs

D

4 hrs

E

3 hrs

F

3 hrs 45 mins

**8**

How many hours and minutes earlier is the second clock?

5:00 vs. 2:00

A

3 hrs 30 mins

B

5 hrs

C

4 hrs

D

3 hrs

E

4 hrs 45 mins

F

3 hrs 15 mins