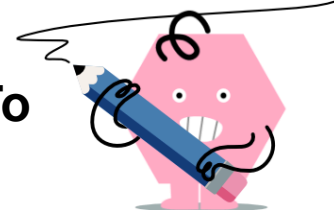




Time - Elapsed Negative - Two Times To Minutes - Half Hours



1 How many minutes earlier is the second clock?

8:30 vs. 8:00

A	30 min	B	45 min
C	15 min	D	75 min
E	60 min	F	120 min

2 How many minutes earlier is the second clock?

11:30 vs. 11:00

A	75 min	B	135 min
C	30 min	D	60 min
E	120 min	F	0 min

3 How many minutes earlier is the second clock?

9:30 vs. 9:00

A	45 min	B	90 min
C	105 min	D	30 min
E	75 min	F	60 min

4 How many minutes earlier is the second clock?

1:30 vs. 1:00

A	75 min	B	60 min
C	90 min	D	135 min
E	45 min	F	30 min

5 How many minutes earlier is the second clock?

10:30 vs. 10:00

A	90 min	B	30 min
C	0 min	D	120 min
E	60 min	F	105 min

6 How many minutes earlier is the second clock?

6:30 vs. 6:00

A	105 min	B	90 min
C	15 min	D	45 min
E	30 min	F	120 min

7 How many minutes earlier is the second clock?

3:30 vs. 3:00

A	75 min	B	105 min
C	30 min	D	0 min
E	90 min	F	120 min

8 How many minutes earlier is the second clock?

5:30 vs. 5:00

A	105 min	B	120 min
C	15 min	D	0 min
E	60 min	F	30 min