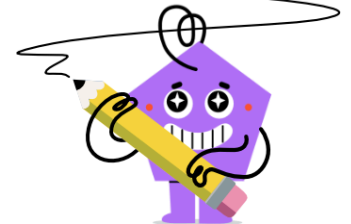
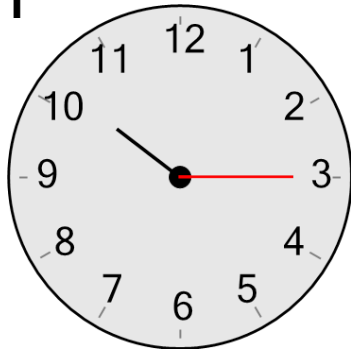




Time - Telling - Minute Hand to Minute

**1**

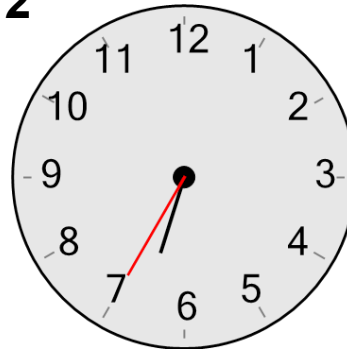
What minute is the minute hand (longer hand) pointing to?

A

15 minutes

B

0 minutes

2

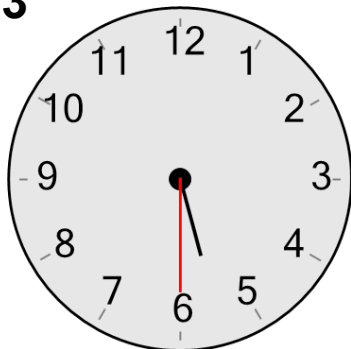
What minute is the minute hand (longer hand) pointing to?

A

35 minutes

B

15 minutes

3

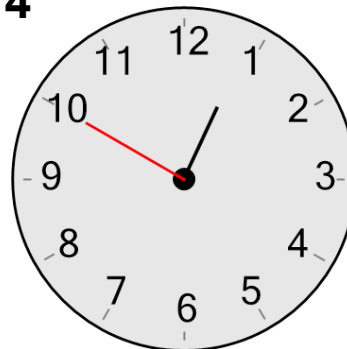
What minute is the minute hand (longer hand) pointing to?

A

30 minutes

B

5 minutes

4

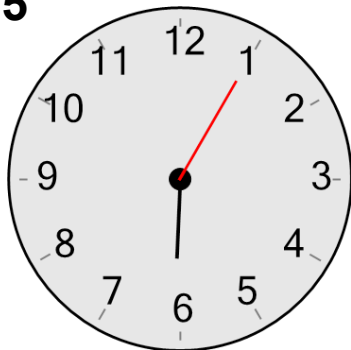
What minute is the minute hand (longer hand) pointing to?

A

15 minutes

B

50 minutes

5

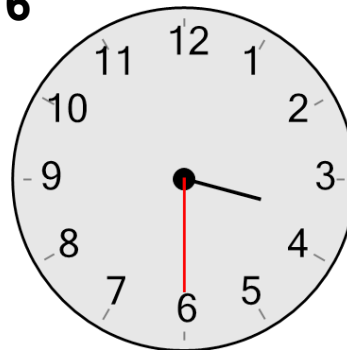
What minute is the minute hand (longer hand) pointing to?

A

55 minutes

B

5 minutes

6

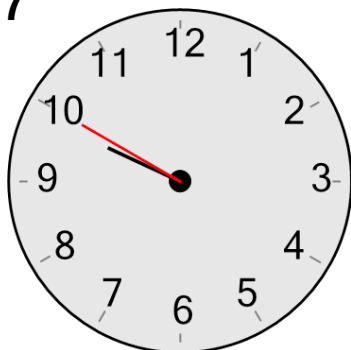
What minute is the minute hand (longer hand) pointing to?

A

0 minutes

B

30 minutes

7

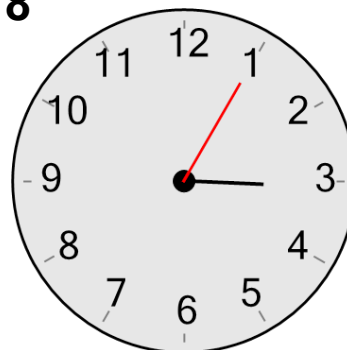
What minute is the minute hand (longer hand) pointing to?

A

50 minutes

B

55 minutes

8

What minute is the minute hand (longer hand) pointing to?

A

55 minutes

B

5 minutes