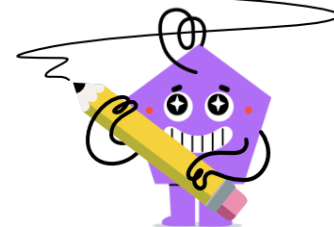




Time - Telling - Minute to Minute Hand (Quarter Hours)

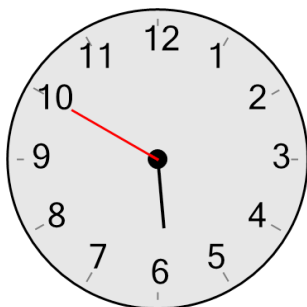


1

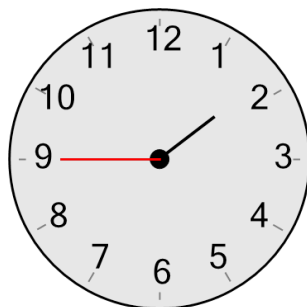
Which clock shows this number of minutes?

45 minutes

A



B

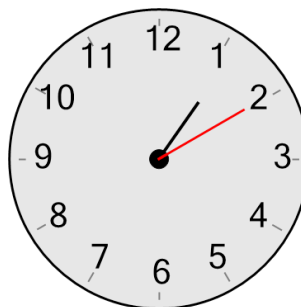


2

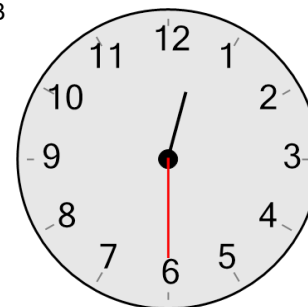
Which clock shows this number of minutes?

30 minutes

A



B

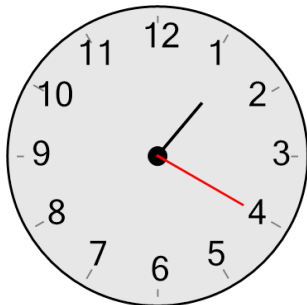


3

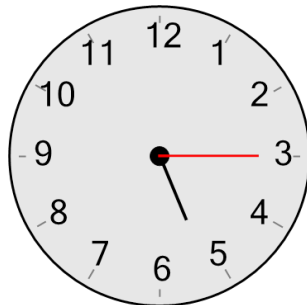
Which clock shows this number of minutes?

15 minutes

A



B

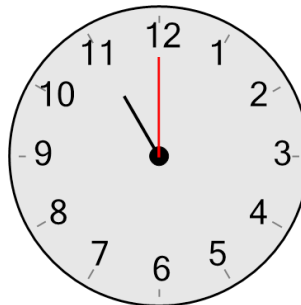


4

Which clock shows this number of minutes?

0 minutes

A



B

