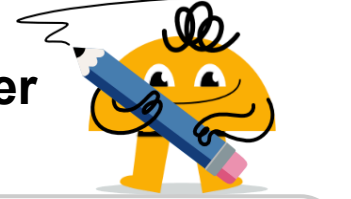
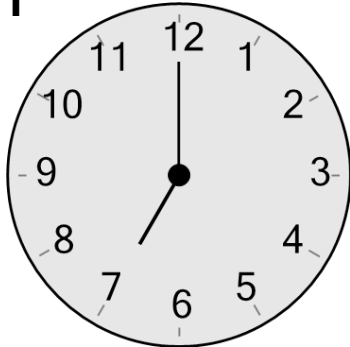




Time - Telling - Clock to Digital - Quarter Hours

**1**

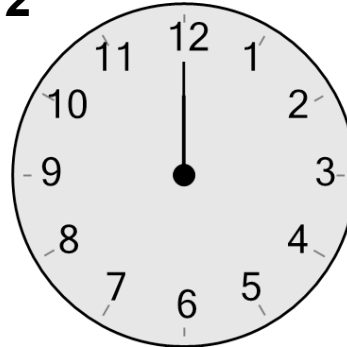
What time is shown on this clock?

A

4:00

B

7:00

2

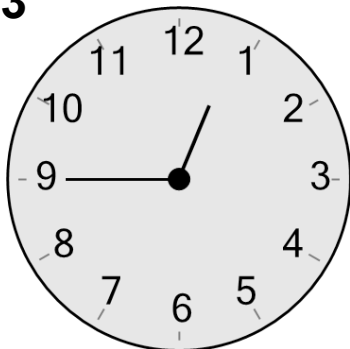
What time is shown on this clock?

A

11:25

B

12:00

3

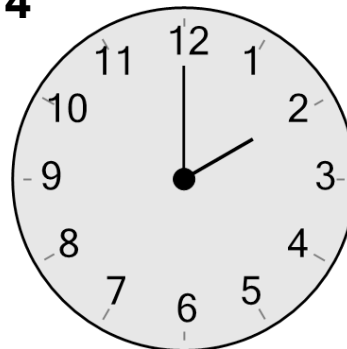
What time is shown on this clock?

A

12:45

B

9:45

4

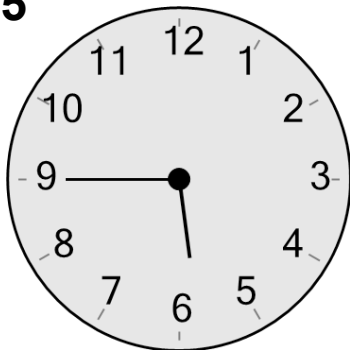
What time is shown on this clock?

A

2:00

B

2:10

5

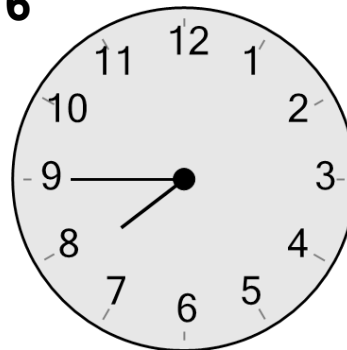
What time is shown on this clock?

A

5:45

B

5:35

6

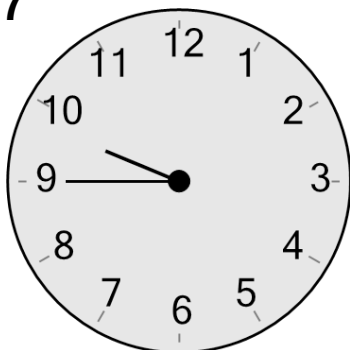
What time is shown on this clock?

A

7:45

B

2:40

7

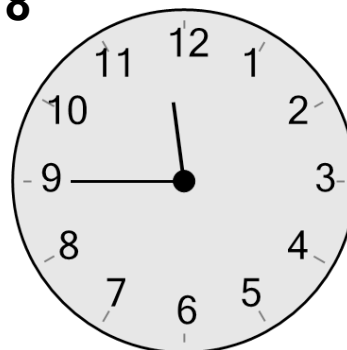
What time is shown on this clock?

A

6:20

B

9:45

8

What time is shown on this clock?

A

10:40

B

11:45